

PUBLIC UTILITIES COMMISSION OF THE STATE OF CALIFORNIA

**Communications Division
Broadband, Policy and Analysis Branch**

**RESOLUTION T-17429
April 10, 2014**

R E S O L U T I O N

Resolution T- 17429 Approval of Funding for the Grant Application of Sunesys, LLC, (U-6991 -C), from the California Advanced Services Fund (CASF) in the Amount of \$10,640,000 for the Connected Central Coast Unserved and Underserved Broadband Project

I. Summary

This Resolution approves funding in the amount of \$10,640,000 from the California Advanced Services Fund (CASF) for the CASF grant application of Sunesys, LLC, (Sunesys) for its Connected Central Coast Unserved and Underserved Broadband Project (Sunesys Project). The Sunesys Project will build a 91.18 mile middle-mile backhaul network from Santa Cruz to Soledad, and extend high-speed internet service to 430 square miles covering Castroville and the California Highway 156 (CA156) corridor towards Prunedale, Chualar, Gonzalez, Soledad and Salinas in the Central Coast. The proposed network will pass through 68 unserved and 1,069 underserved census blocks. This middle-mile infrastructure has the potential to service a number of unserved and underserved adjacent census blocks.

II. Background

On December 20, 2007, the California Public Utilities Commission (Commission) in Decision (D.) 07-12-054 established the CASF program as a two-year program to provide funds for the deployment of broadband infrastructure in unserved and underserved areas in California.

On September 25, 2010, Governor Schwarzenegger signed Senate Bill (SB) 1040¹ which codified the CASF program and expanded it to include three accounts: (1) the Infrastructure Grant Account, (2) the Consortia Grant Account, and (3) the Revolving Loan Account. The latter two accounts are intended to address the needs that were unmet under the original CASF program. Specifically, the purpose of the Revolving Loan Account is “to finance capital costs of broadband facilities not funded by a grant from the Broadband Infrastructure Grant Account.”² SB 1040 also expanded the CASF fund from \$100 million to \$225 million with the addition of \$100 million to the Infrastructure Grant Account, and allocation of \$10 million and \$15 million to the Consortia Grant Account and the Revolving Loan Account, respectively.³

On February 1, 2012, the Commission approved D.12-02-015 to implement new guidelines for the Infrastructure Grant and Revolving Loan Accounts. Key provisions of the Decision include:

- A maximum CASF grant award of 70 percent of project costs for unserved areas and 60 percent for underserved areas;
- A definition of an underserved area, “where broadband is available, but no wireline or wireless facilities-based provider offers service at advertised speeds of at least 6 mbps download and 1.5 mbps upload;” and
- A Revolving Loan Program to provide supplemental financing for projects also applying for CASF grant funding (up to 20% of projects costs, with a maximum of \$500,000), utilizing the same project and applicant eligibility requirements as the Infrastructure Grant Program.

Consequently, on May 10, 2012, the Commission approved Resolution T-17362 which established the application deadlines for the CASF Broadband Infrastructure Grant Account and the Revolving Loan Account as follows:

- October 1, 2012, for unserved areas;
- February 1, 2013, for underserved areas not previously funded by the CASF and hybrid projects that cover both unserved and underserved areas; and,
- A date to be determined for projects in underserved areas where the existing broadband infrastructure was partially funded by a CASF grant.

¹ Stats. 2010, c. 317, codified at Public Utilities (P.U.) Code § 281.

² P.U. Code § 281(e).

³ P.U. Code § 281(b)(1).

On February 1, 2013, Sunesys submitted an application for CASF funding in the unserved and underserved area of Central Coast, covering 91.18 mile route from Santa Cruz to Castroville and the CA156 corridor towards Prunedale, Chualar, Gonzalez, Soledad and Salinas.

III. Notice/Protests

Communications Division (CD) staff posted the proposed area project map, census block groups (CBGs) and zip codes lists by county for the Sunesys Project on the Commission's CASF website page under "Pending New CASF Applications to offer Broadband as of February 11, 2013." CD received two challenges from Comcast Phone of California, LLC, on behalf of its affiliates (Comcast) and Verizon California, Inc., (Verizon) as described below, to the proposed project areas.

IV. Discussion

This Resolution adopts CASF funding award of \$10,640,000 for the Connected Central Coast Broadband Project. This award represents 80% of the total project cost of \$13,300,000 or 87% of the pro-rated and adjusted total project cost of \$12,253,606. Key project information and maps are shown on pages A-1 through A-5 of Appendix A and Appendix B.

A. Project Overview

Sunesys has held a Certificate of Public Convenience and Necessity (CPCN) (U-6991-C) since 2006, and offers fiber optic network construction and dark fiber network infrastructure connectivity. Sunesys owns and operates fiber networks in major metropolitan markets in the United States and is licensed to do business in twelve states including California. In addition, Sunesys leases dark fiber and managed private network services to a number of anchor institutions in the K-12, higher education, healthcare, enterprise, and telecommunications carriers in major metropolitan areas across the country.

In California, Sunesys owns and operates over 1,800 miles of fiber optic cable where much of the network was built to serve the K-12 communities across the state through the Universal Services Administration Company's E-Rate program serving 60 school districts. Other customers include healthcare institutions such as the City of Hope and major telecommunications carriers.

In its application, Sunesys contends that the proposed Sunesys Project area, located in Santa Cruz and Monterey Counties, consists of mostly unserved and underserved areas that currently do not have access to wireline broadband service at served speeds and

where wireless broadband speeds are less than 6 Mbps download and 1.5 Mbps upload. The economy in the area is based on tourism in the coastal regions and agriculture in the Salinas Valley. According to Sunesys, the Salinas Valley is the center for Monterey County's 3.8 billion dollar agriculture industry. However, the region faces many challenges. There are pockets of populations in poverty in North Monterey County and down the Salinas Valley, where most of the population lives. When completed, the Sunesys Project will provide broadband backhaul access at speeds of up to 100 Gigabits per second (Gbps) per fiber strand from the City of Santa Cruz to the first major fiber point-of-presence (PoP) in the Salinas Valley at Soledad, and will partner with regional Internet Service Providers (ISPs) who provide last mile service to these communities.

The CBGs impacted by the project are listed in Appendix B.

The Sunesys Project installation will connect existing fiber from Sunnyvale to Santa Cruz and subsequently to Soledad, creating a fully redundant fiber service to the region with connectivity to major fiber PoP(s) in Sunnyvale and Soledad. Local service providers throughout the Central Coast will be able to connect to the middle-mile network to offer broadband to the communities in the area at or exceeding the 6 Mbps down and 1.5 Mbps up standard set by the CPUC. In addition, Sunesys will provide service to anchor institutions within the project area at significantly higher speeds than the CPUC standard.

According to Sunesys, several local last-mile service providers and local institutions have expressed interest in the project. Sunesys expects that as bandwidth demands continue to increase, additional last-mile service providers will lease connections. To gain backhaul access to the network, Sunesys will work to establish partnerships with service providers and other entities such as Surfnet, a last mile internet service provider; Cruzio, an internet, last mile and data center provider; the California Telehealth Network, California's statewide broadband network dedicated to healthcare; and the Central Coast Broadband Consortium (CCBCs), which works with the public and private sectors on broadband policy, economic initiatives, infrastructure funding and deployment. Additionally, Sunesys will focus to secure anchor institutions to gain access to the network, including Hartnell College and California State University (CSU) Monterey Bay.

Surfnet and Cruzio are two ISPs and last-mile carriers that have planned to partner with Sunesys and serve the Sunesys Project area. Surfnet plans to extend last-mile service in the communities of Paradise Road and Monterey Dunes in Northern Monterey County and is seeking CASF funding for these projects in a related, but separate application.

The Sunesys Project will have the potential to enable last-mile providers to serve up to 11,124 households in the Central Coast. There is also potential for the network to extend affordable bandwidth beyond individual households to businesses already in the area or businesses looking to move into the area.

The Sunesys Project commits to a five-year pricing plan beyond the required two-years, starting from the initial date of service under the following terms:

Description	Monthly Recurring Rate
Lease of fiber by ISPs	\$8.50 per fiber mile per month (this amount equates to \$1,550 for two strands of fiber for the whole route). An ISP pays a minimum charge of \$500 per month for two strands of dark fiber.
1 Gbps – 4 Gbps	\$700 / month first gig; \$400/month each additional gig
5 Gbps – 9 Gbps	\$2,000 / month five gigs; \$300/month each additional gig
10 Gbps +	\$3,000 / month ten gigs; \$2,000/month each additional 10 gigs
Charges for Lateral connection to the Project	Negotiated with the customers and are based on infrastructure, any splicing, termination, or equipment required for additional Lateral connection to the network

Sunesys has informed CD staff that it will honor its pricing commitment above for any contract, of any length, if it is signed during the initial five years. For example if in year four, a customer signs a 10 year contract; Sunesys will honor the above pricing through year 14.

Sunesys has letters of support from the following local service providers, institutions, and government and community agencies.

- California State Assembly – Districts 29 and 30
- Central Coast Broadband Consortium
- The Corporation for Education Network Initiatives in California (CENIC)
- City of Santa Cruz
- City of Watsonville
- County of Santa Cruz
- Cruzio
- California State University – Monterey Bay
- Wireless Education & Technology, CSU Monterey Bay
- California Telehealth Network

- Hartnell College
- Monterey County
- RedShift Internet Services
- Steinbeck Innovation Foundation
- Surfnets Communications

B. Project Qualification

To qualify under the CASF program, the applicant is required to submit proof that the area is unserved or underserved by submitting shapefiles of the proposed project. CD reviews the submitted shapefiles by comparing them with United States 2010 Census data and the California Broadband Availability Map, which contains broadband availability data as of June 30, 2012. Once CD determines that the area is eligible either as an unserved or underserved area, CD staff evaluates all other information submitted by the applicant to determine if the project meets the requirements as outlined in D.12-02-015. Other information CD reviews includes: proof of a CPCN from the Commission; descriptions of current and proposed broadband infrastructure; number of potential subscriber households and average incomes; project construction schedule; project budget; proposed pricing and commitment period for new subscribers; and financial viability of the applicant.

As an initial step in the review of Sunesys's application, CD checked the CBGs as submitted in the project application and corrected the CBGs to conform to the 12-digit format and the 2010 Census. Sunesys agreed with these adjustments. Additionally, CD checked the CBGs submitted in the project application to determine that the project was indeed unserved and underserved. In doing so, CD found broadband availability at served speeds by Satellite providers such as Hughes, Skycasters LLC, ViaSat Communications, and Starband. However, as determined in D.12-02-015, the Commission does not consider satellite broadband service in CASF project evaluation, unless the satellite project in an area was previously funded by the CASF.⁴ CD also found through the California Interactive Broadband Map (map) that the majority of the project area shows as served by mobile broadband providers such as Verizon and T-Mobile. CD requested Sunesys to conduct mobile speed tests in the project area. Sunesys conducted Mobile testing in June and again in November 2013, and the results showed that for the most part, the project area is underserved as further discussed below.

⁴ This determination was based on the limited speed capabilities of satellite services, the cost to the consumer, high latency, and unreliability known at the time of the decision. (D. 12-02-015 at 13-15.) Since that time, like other technologies, satellite services have improved.

Comcast challenged the proposed project area on April 4, 2013. CD staff determined through the California Interactive Broadband Map that Comcast is indeed providing broadband availability at served speeds in the northern section of the project area in Census Blocks (CBs) 060530106061111, 060530106061191, 060530106061208, 060530106061219. Sunesys agreed to remove these served areas from its proposal and submitted the revised project area on April 4, 2013.

On March 11, 2013, Verizon challenged the application stating that wireless carriers continue to build-out their 4G LTE networks. Verizon's challenge was very vague and did not contain information sufficient to determine if Verizon was challenging the entire project proposal or just a specific area of the project. On March 27, 2013, CD staff requested that Verizon clearly identify what areas of the project, by census block, it was challenging and to provide CD with the following information: number of subscribers by census block and speed tier, speed tests with a description on how the speed tests were conducted and what tools were used, and the addresses of the locations where the speed tests were performed to help determine if in fact the area is served. Verizon did not provide a response or any further information on the challenge and therefore CD staff considers Verizon's challenge unsubstantiated. On April 2, 2013, CD staff e-mailed Verizon confirming that Verizon did not provide a response and informed Verizon that CD will continue to consider the majority of the project as eligible for CASF funding.

Additionally, CD staff determined that there are other areas in the project that are categorized as served. These areas include the segment from Santa Cruz to Watsonville, an estimated 27 miles, and the segment from Watsonville to north of Prunedale, an estimated 3 miles, that are served by wireline at speeds greater than 6 Mbps download and 1.5 Mbps upload. However, these particular segments are necessary to extend existing fiber from Sunnyvale to Soledad. Sunesys asserts that these segments are primarily built to benefit the areas south of Prunedale and expects a higher demand for wholesale access to be provided to last mile providers in these southern parts. In D.12-02-015, the Commission established guidance for funding middle-mile projects where broadband infrastructure may have to pass served areas to reach an unserved or underserved area.⁵ In these instances, the Commission directed that applicants pro-rate the costs of such facilities and provide detailed explanation of the cost allocation. Accordingly, Sunesys pro-rated the costs associated with these two segments to reflect the expected benefits these facilities will provide to the unserved and underserved areas.⁶

⁵ D. 12-02-015, Appendix 1 Section III, at 3

⁶ Sunesys estimates that 85% of the costs for the Santa Cruz to Watsonville segment and 45% of the costs for the Watsonville to north Prunedale segment are for the benefit of the unserved and underserved areas of the project, respectively.

CD staff, through the map, also determined that mobile broadband providers T-Mobile and Verizon Wireless service the Cities of Gonzales and Chualar. The map shows field tests performed by the Commission⁷ in the project area with speeds measuring at served levels. Sunesys performed its own tests using CalSPEED⁸ in the area and the results show the majority of the test points with speeds at served levels in both Gonzales and Chualar. Their tests confirmed the availability of service, and as a result the area is considered served. Therefore, the costs associated with this segment, an estimated three miles, are pro-rated to reflect the expected benefits of the build out to unserved and underserved areas.⁹ Sunesys provided an updated proposed project budget with pro-rated costs to account for the fiber backhaul going through these served areas.

Sunesys performed tests using CalSPEED on the remaining areas of Castroville, Moss Landing, Elkhorn and Prunedale. Specifically the map shows that T-Mobile serves the Castroville area. However, the tests performed by Sunesys on November 22, 2013 show actual speeds at underserved levels. Similarly in Moss Landing, the map shows that T-Mobile serves the area, but the majority of tests performed by Sunesys show actual speeds at underserved levels. The map also shows that mobile broadband providers Verizon, and in some parts, T-Mobile, serve the communities of Elkhorn and Prunedale, but the test results performed by Sunesys show otherwise. Moreover, the Commission's own mobile field test shows one test point in the area where Verizon's actual speeds are below served levels and T-Mobile's test shows "no service."

In the southernmost part of the Sunesys project, the city of Soledad shows as underserved by wireline and served by mobile broadband. However, CD has not been able to validate the maximum advertised mobile broadband speeds in the area. CD validates advertised speeds by conducting drive tests at 2,000 points within the state. There is one test point in Soledad, very close to Hwy 101, where actual speeds show less than 6 Mbps download/1.5 Mbps upload by the majority of mobile providers in the area: AT&T, Sprint, and Verizon. However, mobile provider T-Mobile shows actual speeds above 6 Mbps download/1.5 Mbps upload.¹⁰ However, the T-Mobile 3rd round interpolated¹¹ average downstream speed in the area is estimated to be 4 Mbps downstream; below the served threshold. Additionally, Sunesys provided CD staff mobile test results that were performed in Soledad using a Verizon phone and the Commission's CalSPEED mobile test application that further confirms broadband availability at underserved speeds by Verizon Wireless and in some instances, at unserved speeds when the mobile tests were conducted indoors. CD staff therefore deemed the area as eligible for funding.

⁷ CD validates advertised speeds by conducting drive tests at 2,000 points within the State.

⁸ CalSPEED is the Commission's mobile application that is used to test mobile broadband speeds.

⁹ Sunesys estimates that 45% of the costs for this segment are for the benefit of unserved and undeserved areas of the project.

¹⁰ 3rd Round mobile field tests conducted in spring 2013.

¹¹ CD inputs mobile test results into an interpolation model to predict speeds in an area.

The original CASF funding requested by Sunesys was \$11,970,000, which is 90% of the total project cost of \$13,300,000. After adjusting and pro-rating the costs of the segments that go through served areas of Santa Cruz, Watsonville, Gonzales and Chualar, as discussed above, the project funding request is reduced to \$10,640,000, representing a CASF grant equal to 87% of the total adjusted pro-rated project cost of \$12,253,606 or 80% of the total project cost of \$13,300,000.

Since Sunesys's submission of its CASF project application, Round 7 broadband data as of December 31, 2012, show maximum advertised mobile broadband availability from Verizon at speeds greater than 6 Mbps download and 1.5 Mbps upload in the proposed project area¹². However, CD has not been able to validate the maximum advertised mobile broadband speeds in the area. CD validates advertised speeds by conducting drive tests at 2,000 points within the state. There are six test points in the eligible project area where actual speed test results during the fall 2012 mobile broadband drive test are more than 6 Mbps download and 1.5 Mbps upload. However, since the majority of test results conducted by Sunesys shows speeds less than 6 Mbps download or 1.5 Mbps upload in the area, it is unclear whether Verizon completely serves the project area. Additionally, as discussed above, Verizon did not provide a response or any further specific information when CD staff requested more details on the challenge in March 2013. For these reasons, CD staff considers the challenge unsubstantiated. Therefore, CD staff concludes that the remaining communities in the application are unserved or underserved at this time and eligible for CASF funding.

C. Project Evaluation and Recommendation for Funding

CD evaluated the application with respect to the scoring criteria defined in D.12-02-015, Appendix 1, Section VIII (Scoring Criteria). The Scoring Criteria includes: (i) Funds Requested per Potential Customer, (ii) Speed, (iii) Financial Viability, (iv) Pricing, (v) Total Number of Households in the Proposed Area, (vi) Timeliness of Completion of Project, (vii) Guaranteed Pricing Period, and (viii) Low-Income Areas. In addition, five (5) bonus points are added to the score of an applicant that is able to submit local government and community endorsements or letters of support.

¹² On December 19, 2013, Round 8 broadband data as of June 30, 2013 became available in the CA Broadband Availability Map, after CD staff's completed its review and analysis of the numerous mobile tests conducted by the applicant in the project area in June and November 2013 and determination of eligible and not-eligible areas. Latest Commission mobile field tests show improvement of mobile speeds in the Elkhorn, Prunedale, Castroville and Soledad areas. However, the mobile test points vary by providers. Some mobile tests show some providers having mobile speeds at served levels but at other mobile test points in the surrounding area, those same providers show speeds at underserved levels.

The Commission approves funding for this project because it has an above average overall score relative to other projects and will serve customers in unserved and underserved areas. The project scored high in the areas of funds requested per household, total number of households in the proposed area, speeds offered, pricing commitment, and strong community support. The estimated cost per household is \$991 with a total of 11,124 households in the project area; where an estimated 59 households are unserved. Additionally, Sunesys is offering maximum advertised speeds of 100 Gbps per second per fiber strand and a five year pricing commitment. The project encompasses many anchor institutions which may benefit from the deployment of high-speed Internet access in the area (See Appendix D).

The Sunesys Project has letters of support from many government organizations and foundations that stress the need for closing the digital gap for communities in the project area pertaining to education, healthcare, public safety and agricultural. Specifically for agriculture, the Steinbeck Innovation Foundation is working to build the world's first ag-tech cluster through education and advanced research. Having sufficient broadband capabilities in the area is critical and important to support agriculture innovation(s). A number of support letters also indicate the importance of expansion of healthcare services via broadband. Since more seniors are choosing to spend their retirement in this rural and semi-rural area, delivery of healthcare via broadband without sufficient broadband backhaul will be difficult.

The Sunesys Project will serve unserved and underserved areas and meets CASF funding requirements with respect to the following factors:

- Speed - the proposed speed offering of over 100 Gbps complies with the benchmark set by the Commission
- Service area - is determined to be unserved and underserved and covers 430 square miles
- Matching Funds - the applicant has certified that the matching funds will come from their capital budget; the submitted balance sheet, income and cash flow statements show that the applicant is financially viable and has the financial capability to match the funds
- Price commitment period- the applicant has committed to a pricing plan of five years which is three additional years to the standard CASF two year commitment
- Deployment schedule - the project will be completed within 24 months, within the Commission's required construction timeline

Sunesys, in its application and at subsequent meetings with CD staff, has claimed that a 90% CASF funding is necessary to provide last mile providers reasonable wholesale prices that will enable these last mile providers to provide affordable retail services to end users.

Sunesys claimed that if CASF funding were to be reduced to 60%, it will have to charge higher prices for access to the middle mile network, and this could in turn lead to retail monthly recurring prices of \$65 to over \$100 for end use subscribers. In an email dated August 13, 2013, CD staff requested Sunesys to provide additional information to further substantiate its claims and whether it has explored other sources of funding for the project. Sunesys responded that there are no other sources of funding besides the planned Sunesys match and that Sunesys had looked for other sources of funding such as the United States Department of Agriculture (USDA) Rural Utilities Service (RUS) Community Connect program, and local redevelopment funds. However, according to Sunesys, it did not qualify for any funds that were available. Sunesys also stated that there were no tribes within the project area and as a result it could not apply for Tribal funds. Additionally, the Sunesys Project does not qualify for the Federal Communications Commission (FCC) Connect America Fund since it is a middle-mile project.

In its September 9, 2013 response to CD's questions regarding the need for a higher percentage funding, Sunesys provided a table detailing the payback period at various price points for 90% versus 60% CASF grant funding scenarios, assuming 15 entities subscribe for wholesale service (see Appendix C). As shown in the summary table below, with a 90% CASF grant, Sunesys is able to charge a price of \$8.50 per fiber mile per month with a payback period of less than 5 years. If the Commission reduced the CASF funding to 60%, Sunesys would have to charge four times the proposed pricing or \$34 per fiber mile per month in order to recoup its investment within the same payback period. Sunesys stated that for this project to be viable to the company, a payback period of less than 60 months must be achievable. At 60% CASF funding and pricing of \$8.50 per fiber mile per month, the projected payback period amounts to 19 years. Originally, Sunesys claimed that a payback period of longer than 5 years would not provide Sunesys with a sound business plan to achieve an appropriate payback on its invested capital. However, after pro-rating the cost of the segments transiting served areas, Sunesys agreed to a payback period of 9.5 years versus 5 years, assuming that CASF funding is at 80% of the total project cost of \$13,300,000.

Price per fiber mile per month	60% funding Payback Period (Months)	90% funding Payback Period (Months)	80% funding Payback Period (Months)
\$8.50	228.8	57.2	114.4
\$11	176.8	-	-
\$34	57.2	-	-

Thus, as discussed above, Sunesys's request for a higher percentage of CASF funding is predicated on the cost per fiber mile per month, the estimated number of last mile providers that are expected to sign-up for service, and the expected payback period. Changing any of these parameters may result in CASF funding levels above 60% but less

than 80% of the total project costs of \$13.3 million. For example, if Sunesys were to increase the price it charges last-mile providers from \$8.50 per fiber mile per month to \$10, retain the number of last mile providers expected to sign up for service, and have a payback period of 10 years, it will require an estimated \$10,017,700 in CASF funding with Sunesys investing \$3,282,300 from its capital budget. This equates to 75% CASF funding of the total project costs of \$13.3 million or 81.75% CASF funding of the total pro-rated costs of \$12.25 million. Similarly, if Sunesys were to increase price to \$11 per fiber mile per month, retain the number of last mile providers expected to sign up for service, and have a payback period of 10 years, it will require an estimated \$9,689,470 in CASF funding with Sunesys investing \$3,610,530 from its capital budget. This equates to 73% CASF funding of total project costs of \$13.3 million or 79% CASF funding of total pro-rated costs. However, it is not reasonable to assume that given a price increase that the number of last mile providers to sign up for service would not change. An increase in price is likely to negatively affect project subscribership.

Sunesys, in its September 9, 2013 response, also included a letter from Surfnet dated September 3, 2013, which stated that if Sunesys raises its rates for fiber mile from \$8.50 to \$11 per month, Surfnet will have to increase its end users' monthly recurring rates from \$65 to \$85. Surfnet contends that any increase above \$11 per month per fiber mile will likely push monthly recurring rates to \$100 or above, which is an unrealistic price that households within the project area are less likely to pay. Based on the socioeconomic demographics in the project area, CD staff anticipates that an increase in monthly recurring prices may reduce subscribership in the area where there is a relatively high unemployment rate and where 16.1% of the population lives below poverty level in 2008 to 2012.¹³ If Sunesys were to charge \$34 per fiber mile per month, it is likely that Surfnet will not be able to pursue the project because it will have to increase the price to end users so high that the take rate will not make the project financially viable.

After review of the additional information provided by Sunesys, the Commission recognizes that a higher level of CASF funding may be needed for Sunesys to undertake the project. Particularly given the lack of other available sources of funding for the project, as attested by Sunesys, and in efforts to bring the necessary broadband infrastructure to the Central Coast to promote economic development in the area, a higher CASF funding of the total project costs may be necessary in order to keep prices for access to the middle mile network at reasonable rates. Sunesys has stated that it will not be willing to take on this project without CASF funding of at least 80% of the total project costs of \$13,300,000 or 87% of the total adjusted pro-rated project cost of \$12,253,606, because a smaller

¹³ For unemployment rates see Monthly Labor Force Data for Cities and Census Designated Places: <http://www.labormarketinfo.edd.ca.gov>. Poverty level between 2008 to 2012 was 16.1% for Monterey County, but within the project area, it is mostly higher. (See <http://quickfacts.census.gov/qfd/states/06/06053.html>)

funding percentage on this project will take too long to receive a viable return on the invested capital.

In summary, as discussed above, the Commission approves a higher funding for the Sunesys Project for the following reasons:

- Wholesale pricing to last-mile providers in the project area will be set at \$8.50 per fiber mile per month. This proposed pricing represents a significant reduction over the standard rates Sunesys charges in other markets that includes \$60 - \$65 fiber per mile per month on a three to five year contract.
- A five year pricing commitment; three additional years to the standard CASF two year commitment. This pricing commitment may be longer than five years for those entities who sign contracts with Sunesys during the initial five years as discussed earlier.
- A higher wholesale price above the \$8.50 per fiber mile per month will negatively impact existing CASF last-mile project proposals in the area from Internet Service Provider (ISP) Surfnet that propose to bring broadband service to 398 households in Monterey County. As discussed above, Surfnet's monthly recurring charge to end users is based on obtaining backhaul access wholesale service from Sunesys at \$8.50 per fiber mile per month. If there is an increase in pricing from Sunesys, Surfnet will need to increase pricing to its end users. For example, if Sunesys were to charge \$11 per fiber mile per month, it will cause Surfnet to increase its pricing by 30% to end users. Such a significant price increase to end users creates a concern for Surfnet because the take rate of subscriptions will likely go down. If Sunesys were to charge \$34 per fiber mile per month, it is likely that Surfnet will not be able to pursue the project because it will hike the price of end user so high that the take rate will not make the project financially viable.
- This project will benefit emergency services and a number of anchor institutions in the K-12, higher education, healthcare, enterprise, agricultural sector and telecommunications carriers.

The Commission finds that funding the Sunesys Project is for the public benefit and aligns with CASF's goal to encourage the deployment of high-quality advanced information and communications technologies to all Californians to promote economic growth, job creation, and substantial social benefits. Based on its review, CD determined that the Sunesys Project grant application qualifies for funding as an unserved and underserved area. The social benefits of this project extend to agricultural areas and low income communities and can benefit numerous first responders, schools and community anchor institutions.

D. Safety Impact

This project will improve connectivity to the surrounding areas and many anchor institutions. Sunesys will provide a robust backbone network to local ISPs, which will in return, enables them to offer affordable and reliable services to anchor institutions, emergency first responders and other public agencies. The high speed Internet connections will facilitate the transmission of data and communications amongst first responders and the public. There are many community anchor institutions in the project area such as the sheriff's office, fire department, schools, library, and ambulance services that will potentially benefit from the project. For a complete list of these anchor institutions, please see tables 1 thru 3, in Appendix D.

According to Sunesys, this project will build a backbone that is important to the migration to Next Generation (NG) 9-1-1 as well as the functioning of the emergency first responders. It will provide a pathway to the Internet for Santa Cruz and Monterey Counties. This path will be an option for all local ISPs to provide redundancy on services they provide to customers in the proposed service area.

The Sunesys Project could prove to be of critical value during natural disasters because it includes areas with high flood hazards and high earthquake occurrences and it is important to have reliable systems in place when and if a disaster strike.

V. Compliance Requirements

Sunesys should comply with all the guidelines, requirements, and conditions associated with the granting of CASF funds as specified in D.12-02-015. Such compliance includes, but is not limited to:

A. California Environmental Quality Act (CEQA)

The Sunesys Project is subject to the California Environmental Quality Act (CEQA) review. The Commission must complete CEQA review prior to disbursing CASF funds for construction activities.

Prior to any construction activity, the carrier is required to seek further authority from the Commission for such activity by filing a Proponent's Environmental Assessment (PEA) pursuant to Commission Rule of Practice and Procedure 2.4, and must undergo an environmental review pursuant to the California Environmental Quality Act (CEQA). (California Public Resources Code § 21000, *et seq.*) Carriers should contact the Supervisor of the Commission's Energy Division CEQA Unit well in advance of a contemplated filing to (a) consult with staff regarding the process of developing and filing a PEA; (b) provide for cost recovery per Rule of Practice and Procedure 2.5; and (c) enter into a Memorandum

of Understanding to allow the Energy Division to initiate the retention of an environmental contractor to perform the environmental review.

Carriers may file a completed CEQA review conducted by another agency acting as the Lead Agency pursuant to CEQA; carriers should make every effort to ensure that the Commission's CEQA Unit is aware of and included in the CEQA process if it is conducted by another agency acting as the CEQA Lead Agency. Carriers should contact the Supervisor of the Commission's Energy Division CEQA Unit well in advance of a contemplated filing to consult with staff regarding the applicability of another agency's CEQA review.

B. Deployment Schedule

The Commission expects Sunesys to complete the project in 24 months from the start date. If the applicant is unable to complete the proposed project within the 24-month timeframe identified in its application, Sunesys must notify CD's Director as soon as it becomes aware of this prospect. The Commission may reduce payment for failure to notify CD's Director and timely complete the project. In D.12-02-015, the Commission required complete build-out of a CASF-funded project within 24 months from approval of the application.

C. Execution and Performance

CD staff and the CASF grant recipient shall determine a project start date after the CASF grant recipient has obtained all approvals. Should the recipient or contractor fail to commence work at the agreed upon time, the Commission, upon five (5) days written notice to the CASF recipient, reserves the right to terminate the award.

In the event that the CASF recipient fails to complete the project, in accordance with the terms of approval granted by the Commission, the CASF recipient must reimburse some or all of the CASF funds that it has received.

The CASF grant recipient must complete all performance under the award on or before the termination date of the award.

D. Performance Bond

The Commission requires a Performance Bond if the applicant certifies that the percentage of the total project costs it is providing comes from their capital budget and is not obtained from outside financing. Sunesys has stated that the project's matching funds will come from its capital budget. However, due to the higher percentage of funding requested from the CASF, the Commission will require a performance bond on this project.

E. Price Commitment Period

The minimum required price commitment period for broadband service to all households within the project area is two years. Sunesys guarantees the price of service offered in the project area for five years. This pricing commitment may be longer than five years for those entities who sign contracts with Sunesys during the initial five years as discussed earlier.

F. Project Audit

The Commission has the right to conduct any necessary audit, verification, and discovery during project implementation and construction to ensure that CASF funds are spent in accordance with Commission approval.

The recipient's invoices will be subject to a financial audit by the Commission at any time within three (3) years of completion of the work.

G. Providing Voice Service

If the grantee is providing voice service in the project area, it must meet the Federal Communications Commission (FCC) standards for E-911 service and utilize battery backup Power. However, Sunesys will not be providing voice service.

H. Reporting

Grantees must submit quarterly progress reports on the status of the project irrespective of whether grantees request reimbursement or payment. Before full payment of the project, the CASF recipient must submit a project completion report. Progress reports shall use both the schedule for deployment; major construction milestones and costs submitted in the proposals, indicate the actual date of completion of each task/milestone as well as problems and issues encountered, and the actions taken to resolve these problems and issues during project implementation and construction; and identify future risks to the project. Recipients shall also include test results on the download speed and upload speed per CBG and per ZIP Code basis in the final completion report. Recipients must certify that each progress report is true and correct under penalty of perjury.

I. Submission of Form 477

The FCC currently requires broadband providers to submit Form 477 biannually and include speed data. While there is an imperfect match between the current reporting areas for the Form 477 and CASF, Form 477 information will be useful in documenting CASF

deployment for the specific new service area(s) of the carrier. CASF recipients shall submit a copy of their Form 477 data directly to the Commission, under General Order 66-C, when they submit this data to the FCC for a five year period after completion of the project.¹⁴

VI. Payments to CASF Recipients

Submission of invoices from and payments to Sunesys shall be made in accordance with Section XI of Appendix 1 of D.12-02-015 and according to the guidelines and supporting documentation required in that decision.

Payment to Sunesys shall essentially follow the process adopted for funds created under P. U. Code § 270. The following table describes the timeline for processing CASF payments.

Event	Payment Cycle 1 (Day/Month)	Payment Cycle 2 (Day/Month)
Invoices due from Sunesys to CD	5 th of Month 1	20 th of Month 1
Payment letters from CD to Administrative Services ¹⁵	On 19 th of Month 1	On 4 th of Month 2
Invoices submitted from Administrative Services to State Controller's Office (SCO) for payments	20 th through 26 th of Month 1	5 th through 13 th of Month 2

Sunesys may submit its invoices under Payment Cycle 1 or 2.

If any date in this payment schedule falls on a weekend or holiday, that date will be advanced to the next business day but the remaining dates in the payment schedule will remain unchanged. The State Controller's Office (SCO) requires 14 to 21 days to issue payment from the day that requests are received by SCO.

VII. Comments on Draft Resolution

¹⁴ *Approval of the California Advanced Services Fund (CASF) Application Requirements and Scoring Criteria for Awarding CASF Funds* (2008) Cal. P.U.C. Res. No. T-17143 at 4.

¹⁵ The above schedule is contingent on the CASF recipient submitting clear, complete, and error-free invoices to CD. Additional time to process payments may be necessary if CD finds problems with the submitted invoices.

In compliance with P.U. Code § 311(g), a notice letter was emailed on February 21, 2014, informing all applicants filing for CASF funding and parties on the service list of R.06-06-028, and the CASF distribution list of the availability of the draft of this Resolution for public comments at the Commission's website <http://www.cpuc.ca.gov/PUC/documents/>. This letter also informed parties that the final conformed Resolution adopted by the Commission will be posted and will be available at this same website.

On March 17, 2014, the Central Coast Broadband Consortium (CCBC) submitted comments on the alternate draft resolution, which include letters of support from elected representative, senior officials, and members of the business community as listed below:

1. Simon Salinas, Monterey County Supervisor, District 3
2. Louis Calcagno, Monterey County Supervisor, District 2
3. Maria Orozco, Mayor, City of Gonzales
4. Rene Mendez, City Manager, City of Gonzales
5. Adela Gonzalez, City Manager, City of Soledad
6. Susan Stanton, City Manager, City of Greenfield
7. Michael Powers, City Manager, City of King
8. Nancy Kowtowski, Monterey County Superintendent of Schools
9. Jose Martinez-Saldana, Executive Director, Salinas United Business Association
10. Paul Farmer, President, Salinas Valley Chamber of Commerce
11. Mary Ann Leffel, President, Monterey County Business Council
12. Bud Colligan, Founder and CEO, South Swell Ventures
13. Jody Hansen, President, Monterey Peninsula Chamber of Commerce
14. Maura Twomey, Executive Director, Association of Monterey Bay Area Governments
15. Eric Tao, Director, California State University Monterey Bay, IIED
16. Dave Potter, Monterey County Supervisor, District 5
17. Lynn Robinson, Mayor, City of Santa Cruz
18. Chuck Della Sala, Mayor, City of Monterey
19. Don Lane, Vice Mayor, City of Santa Cruz
20. Cynthia Mathews, Councilmember, City of Santa Cruz
21. Martin Bernal, City Manager, City of Santa Cruz

In addition, the Commission also received letters of support from Mayor Karina Cervantes of Watsonville, dated February 14, 2014; Supervisor Zack Friend of the County of Santa Cruz, dated February 19, 2014; and Mayor Joe Gunter of Salinas, dated February 24, 2014.

In its comments, CCBC notes that the Sunesys middle mile proposal exactly matches the areas of the region with the greatest last mile needs. At the request of CD staff, CCBC analyzed its three-county region and identified ten communities with the highest priority for CASF support. These communities are all either directly served by the Sunesys project – Soledad, Gonzales, Chualar, Castroville – or are just south of its southern terminus –

Greenfield, King City, San Lucas, San Ardo, Pine Canyon – or just to the east, in the case of Aromas. CCBC further notes that in just these ten communities, 77,004 people live in 15,756 households according to the 2010 U.S. census. Excluding the Aromas area, which is more rural and sparsely populated than the nine Salinas Valley communities, population density exceeds 2,000 people per square mile, an average of five people live in each home and household income averages less than \$48,000 per year. These communities also suffer from high unemployment, high poverty levels and poor education.

CCBC further points to the widespread community support for the project, as evidenced by the letters of support attached to CCBC's comments, as well as those sent directly to the Commission. These letters urge the Commission to increase CASF funding to 83% of the total project costs, noting that there are strong justifications to support the higher award. All these letters point to a lack of broadband access in the economically depressed communities and how the Sunesys project would serve thousands of students attending K-12 schools, community colleges and universities, parents, businesses, and employees in the area. The letters also contend that these communities suffer from a lower quality of health care and public safety because residents and the agencies they rely upon cannot take full advantage of technological advancements.

VIII. Findings

1. On May 10, 2012, the Commission approved Resolution T-17362 which established the application deadlines for the CASF Broadband Infrastructure Grant Account and the Revolving Loan Account as follows: October 1, 2012, for unserved areas; February 1, 2013, for underserved areas not previously funded by the CASF and hybrid projects that cover both unserved and underserved areas; and, a date to be determined for projects in underserved areas where the existing broadband infrastructure was partially funded by a CASF grant.
2. Sunesys filed an application for CASF funding for its Connected Central Coast Project on February 1, 2013. The Sunesys Project will build a 91.18 mile middle-mile backbone network from Santa Cruz to Soledad and extend high-speed internet service to 430 square miles covering Castroville and the CA156 corridor towards Prunedale, Chualar, Gonzalez, Soledad and Salinas in Central Coast. The proposed network will pass through 1,232 unserved and 445 underserved census blocks. This backbone has the potential to service a number of unserved and underserved adjacent census blocks.
3. This expansion will have the potential to enable last mile providers to bring high speed Internet access to 11,124 households in the Central Coast area. The CBGs impacted by the project are specified in Appendix B.

4. CD posted the map, CBGs and zip codes lists by county for the Sunesys Project on the Commission's CASF website page under "Pending New CASF Applications to Offer Broadband as of February 11, 2013." CD received challenges from Comcast and Verizon to the proposed project areas. Verizon asserted that it provides Internet service in this area at served speeds. However, Verizon did not respond to CD staff inquiries to validate its challenge, and neither CD staff's mobile drive tests nor the interpolation model based on these tests validated Verizon's maximum advertised speed in the updated project area; therefore CD staff considers the challenge unsubstantiated.
5. CD reviewed and analyzed data submitted for the Sunesys Project CASF grant application to determine the project's eligibility for CASF funding. This data includes, but is not limited to: proof of a CPCN from the Commission; descriptions of current and proposed broadband infrastructure; geographic information system (GIS) formatted shapefiles mapping the subject areas; assertion that the area is unserved and underserved; number of potential subscriber households and average incomes; project construction schedule; project budget; proposed pricing and commitment period for new subscribers; and financial viability of the applicant.
6. CD reviewed the submitted shapefiles which mapped the proposed broadband deployment using United States 2010, Census data and the California Broadband Availability Map, which contains broadband availability data as of June 30, 2012. This helped to verify the existence or non-existence of broadband service areas and broadband speeds, where available.
7. Based on its review, CD determined that the project qualifies for funding under D.12-02-015 and recommends Commission approval of CASF funding for the Sunesys Project.
8. CD staff revised and reduced the CASF funding to \$10,640,000 for the Sunesys Project after pro-rating the costs associated with the middle-mile segments that transit served areas from Santa Cruz to north Prunedale. This revised amount represents 80% of the total project cost of \$13,300,000 or 87% of the pro-rated and adjusted total project cost of \$12,253,606.
9. The Commission recognizes that a higher level of CASF funding may be needed for Sunesys to undertake the project. The Commission therefore approves 80% CASF funding of the project costs of \$13,300,000 or 87% of the pro-rated adjusted total project cost of \$12,253,606, because at this higher percentage funding, Sunesys will be able to charge a lower price for its fiber strand which in turn will keep prices to the last mile customers at reasonable rates. Sunesys will offer this price for a period of five years rather than the required two years. Furthermore, Sunesys has informed CD staff that it

will honor its pricing commitment for any contract, of any length, if it is signed during the initial five years.

10. At 60% CASF funding and at the proposed wholesale price of \$8.50 per fiber mile per month it would take Sunesys 19 years to obtain a payback of its capital investment. To make the project financially viable in a 5 year period, Sunesys has estimated that it will need to charge last mile providers a higher wholesale price of at minimum \$34 per fiber mile per month.
11. A higher wholesale price above the \$8.50 per fiber mile per month will negatively impact existing CASF last-mile project proposals in the area from ISP Surfnet that proposes to bring broadband service to 398 households in Monterey County.
12. Sunesys is required to post a performance bond because only 10% of the total pro-rated project cost will be financed through Sunesys's existing capital budget.
13. Sunesys is required to comply with all guidelines, requirements, and conditions associated with the granting of CASF funds as specified in D.12-02-015 and must submit the FCC Form 477, as specified in Resolution T-17143.
14. Sunesys proposes to conduct all work in 24 months.
15. This project is subject to the California Environmental Quality Act (CEQA) review and must abide by the requirements set forth in the CEQA Section of this Resolution.
16. A notice letter was emailed on February 21, 2014, informing all applicants filing for CASF funding, parties on the service list of R.06-06-028, and the CASF distribution list of the availability of the draft of this Resolution for public comments at the Commission's website <http://www.cpuc.ca.gov/PUC/documents/>. This letter also informed parties that the final conformed Resolution adopted by the Commission will be posted and available at this same website.
17. On March 17, 2014, the Commission received comments from the Central Coast Broadband Consortium (CCBC), which include 21 letters of support from elected representative, senior officials, and members of the business community. In addition, the Commission also received letters of support from Mayor Karina Cervantes of Watsonville, dated February 14, 2014; Supervisor Zack Friend of the County of Santa Cruz, dated February 19, 2014; and Mayor Joe Gunter of Salinas, dated February 24, 2014. CCBC and all the letters of support urges the Commission to approve a higher CASF funding level at 83% of the total project cost of \$13.3 million, noting that there are strong justifications to support the higher award.

18. In its comments, CCBC notes that the Sunesys middle mile proposal exactly matches the areas of the region with the greatest last mile needs, based on its analysis that identified ten communities with the highest priority for CASF support. These communities are all either directly served by the Sunesys project – Soledad, Gonzales, Chualar, Castroville – or are just south of its southern terminus – Greenfield, King City, San Lucas, San Ardo, Pine Canyon – or just to the east, in the case of Aromas. CCBC further notes that in just these ten communities, 77,004 people live in 15,756 households according to the 2010 U.S. census.
19. The Commission finds funding the Sunesys Project as summarized in Appendix A to be reasonable.

THEREFORE, IT IS ORDERED that:

1. The Commission shall award from the CASF to Sunesys up to \$10,640,000 for the Sunesys LCC unserved and underserved area broadband project as described herein and summarized in Appendix A of this Resolution.
2. The program fund payment of up to \$10,640,000 for this unserved and underserved project shall be paid out of the CASF fund in accordance with the guidelines adopted in D.12-02-015 and in accordance with the compliance of avoidance measures described in this Resolution.
3. Payments to the CASF recipient shall be in accordance with Section XI of Appendix 1 of D.12-02-015 and in accordance with the process defined in the “Payments to CASF Recipients” section of this Resolution.
4. Sunesys shall post a performance bond.
5. The CASF fund recipient, Sunesys, shall comply with all guidelines, requirements and conditions associated with the CASF funds award as specified in D.12-02-015 and must submit the FCC Form 477, as specified in Resolution T-17143.

This Resolution is effective today.

I hereby certify that this Resolution was adopted by the Public Utilities Commission at its regular meeting on April 10, 2014. The following Commissioners approved it:

/s/ Paul Clanon

PAUL CLANON
Executive Director

MICHAEL R. PEEVEY
President
MICHEL PETER FLORIO
CATHERINE J.K. SANDOVAL
CARLA J. PETERMAN
MICHAEL PICKER
Commissioners

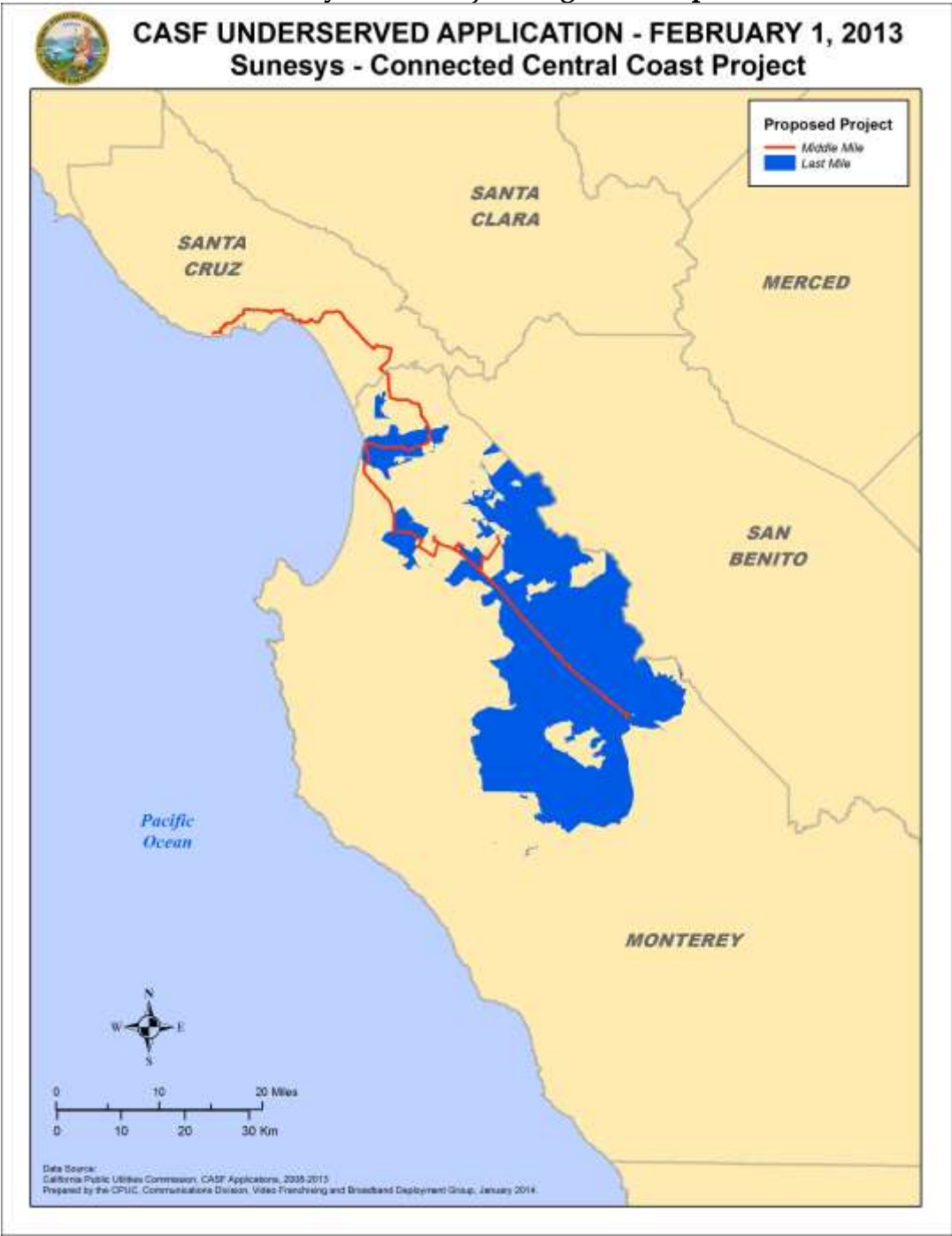
APPENDIX A
Resolution T- 17429
Sunesys, Inc. Project
Key Information

Project Name		Sunesys, Inc., Project		
Project Plan		This project will build a 91.18 mile middle-mile backbone network from Santa Cruz to Soledad, and extend high-speed internet service to 430 square miles covering portions of the Central Coast between Salinas and Soledad in Santa Cruz and Monterey Counties. The proposed network will pass through 1,232 unserved and 445 underserved census blocks. Additionally, we believe this backbone has the potential to service a number of unserved and underserved adjacent census blocks.		
Project Size (in square miles)		430		
Download / upload speed (in Mbps)		Over 100 Gbps		
Location		Connected Central Coast		
Community Name		Castroville and the CA156 corridor towards Prunedale, Chualar, Gonzalez, Soledad and Salinas		
CBGs / Household Income		60530103051	\$80,500.00	
		60530103052	\$84,773.00	
		60530104001	\$48,566.00	
		60530104002	\$44,808.00	
		60530104003	\$37,258.00	
		60530104004	\$41,699.00	
		60530106061	\$67,083.00	
		60530108041	\$39,048.00	
		60530108042	\$48,818.00	
		60530108043	\$48,750.00	
		60530109001	\$0.00	
		60530111011	\$53,929.00	
		60530111012	\$59,113.00	
		60530111013	\$29,206.00	
		60530111021	\$41,285.00	

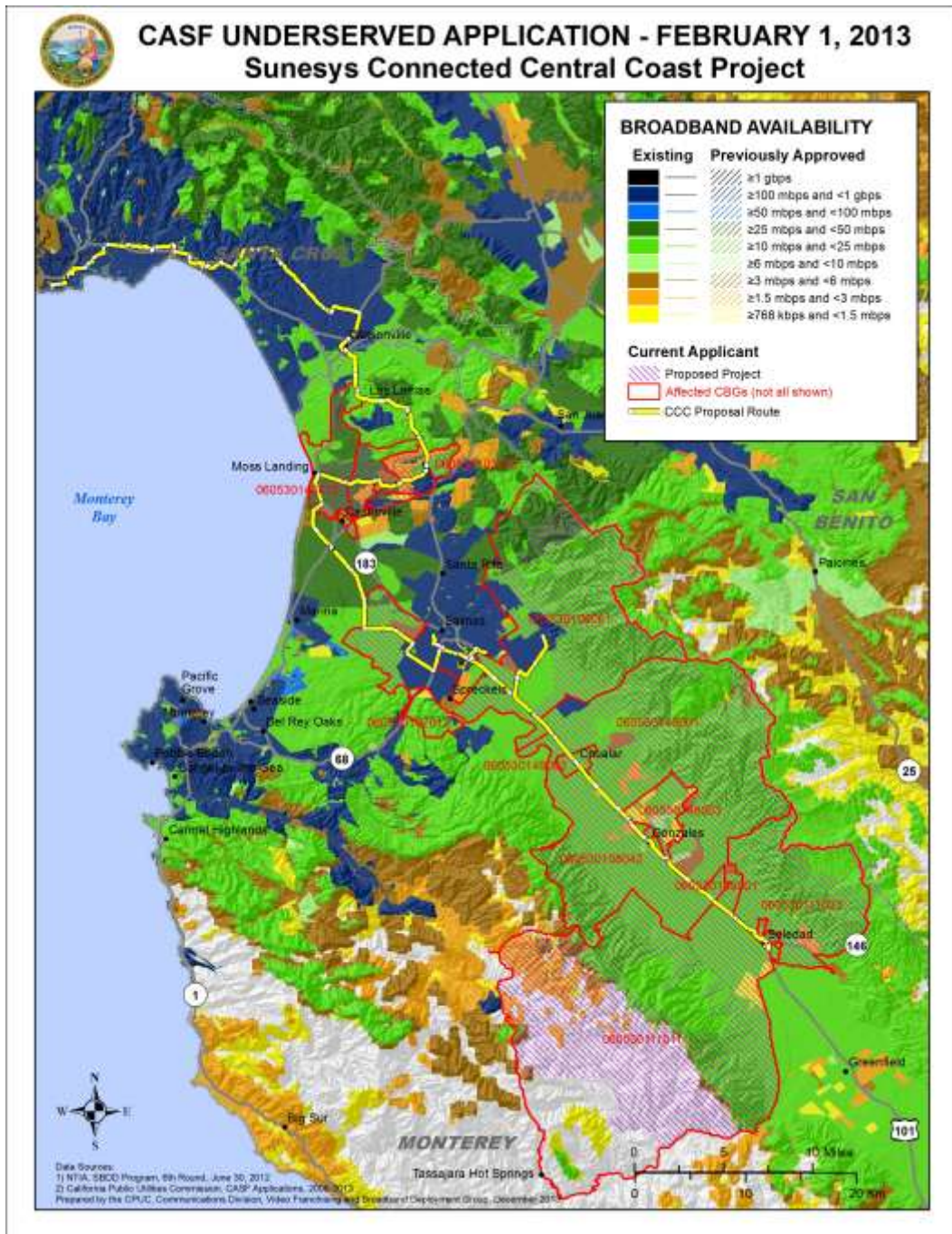
Resolution T-17429
CD/SIM

		60530111022	\$60,993.00	
		60530111023	\$77,432.00	
		60530146012	\$46,500.00	
		60530147001	\$70,341.00	
		60530147002	\$87,143.00	
		60530147003	\$71,991.00	
		60530147004	\$54,063.00	
		60530148001	\$56,500.00	
		60530148002	\$49,141.00	
		60530148003	\$64,492.00	
		93907		
ZIP Codes		93905		
		93926		
		93960		
		95039		
		95012		
		93925		
		93908		
Estimated Potential Subscriber Size Households / Subscribers		11,124		
Deployment Schedule (from Commission approval date)		24 months		
Proposed Project Budget				
Total (without CIAC)		\$13,300,000 Prorated: \$12,253,606		
Amount of CASF Funds Approved (80% of total project costs or 87% of pro-rated amount)		\$10,640,000		
Internally funded (20% of total project costs or 22% of pro-rated amount)		\$2,660,000		

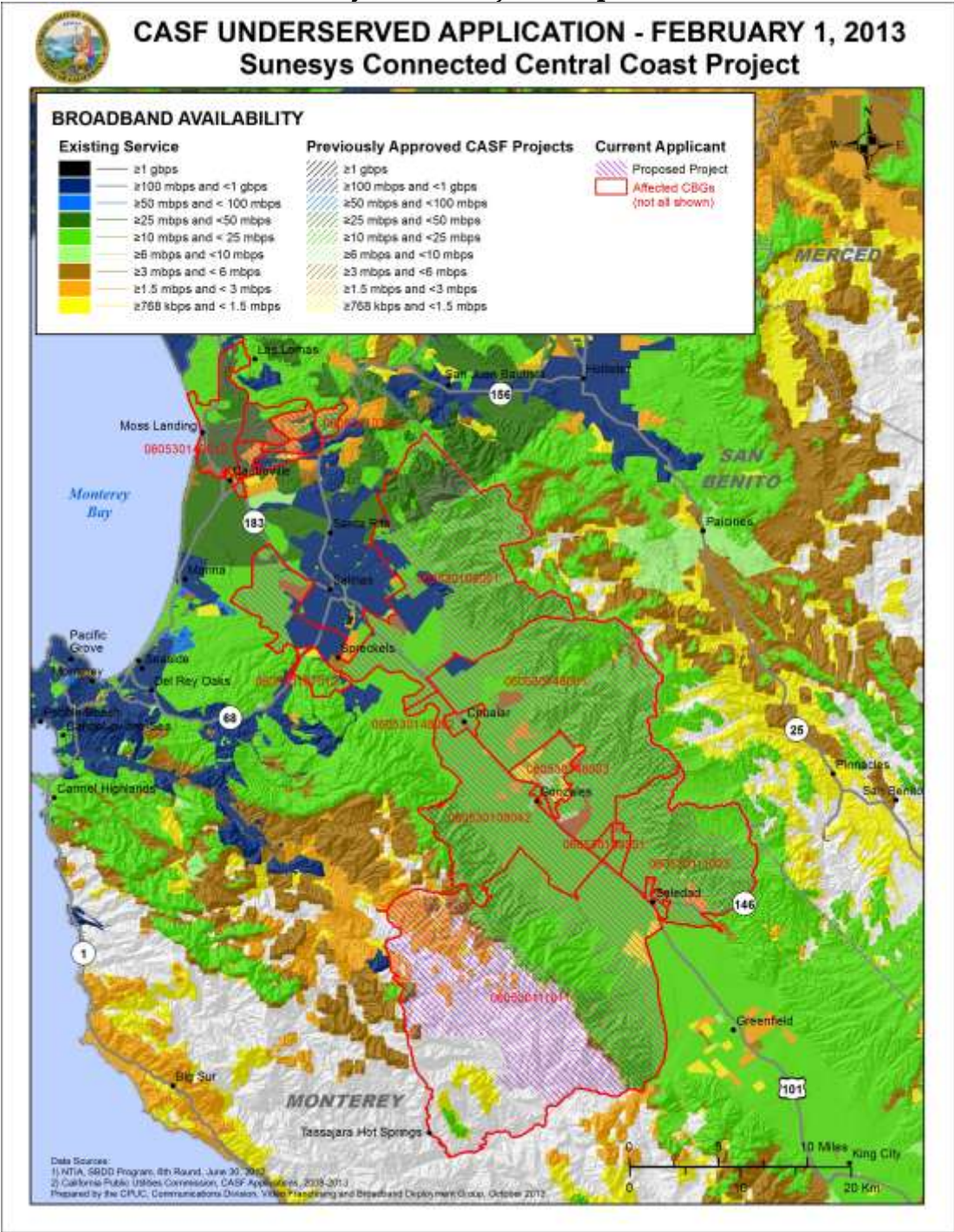
APPENDIX A
Resolution T-17429
Sunesys, Inc., Project Regional Map



APPENDIX A
Resolution T-17429
Sunesys, Inc., Project Route Map



APPENDIX A
Resolution T- 17429
Sunesys, Inc., Project Shapefiles



END OF APPENDIX A

APPENDIX B
Resolution T-17429
List of Census Block Groups

Covered CBGs	But not including these CBs
060530103051	060530103051000, 060530103051008
060530103052	060530103052011
060530104001	
060530104002	
060530104003	
060530104004	
060530106061	060530106061004, 060530106061007, 060530106061010, 060530106061012, 060530106061022, 060530106061055, 060530106061090, 060530106061091, 060530106061095, 060530106061111, 060530106061113, 060530106061117, 060530106061140, 060530106061141, 060530106061151, 060530106061153, 060530106061154, 060530106061156, 060530106061191, 060530106061192, 060530106061208, 060530106061209, 060530106061210, 060530106061211, 060530106061212, 060530106061213, 060530106061214, 060530106061216, 060530106061217, 060530106061219, 060530106061221, 060530106061233, 060530106061234, 060530106061240, 060530106061241, 060530106061243, 060530106061258, 060530106061260, 060530106061295, 060530106061297
060530108041	
060530108042	
060530108043	
060530109001	
060530111011	060530111011106, 060530111011143
060530111012	060530111012005
060530111013	
060530111021	
060530111022	
060530111023	060530111023027, 060530111023032
060530146012	060530146012000, 060530146012001, 060530146012002, 060530146012003, 060530146012004, 060530146012005, 060530146012006, 060530146012008, 060530146012009, 060530146012010, 060530146012011, 060530146012012, 060530146012013, 060530146012014, 060530146012016, 060530146012017, 060530146012018, 060530146012019, 060530146012020, 060530146012021, 060530146012022, 060530146012023, 060530146012024, 060530146012025, 060530146012026, 060530146012027, 060530146012052, 060530146012053, 060530146012054, 060530146012070, 060530146012071, 060530146012072, 060530146012073
060530147001	060530147001000, 060530147001001, 060530147001002, 060530147001003, 060530147001004, 060530147001010, 060530147001011
060530147002	060530147002006, 060530147002009
060530147003	060530147003000
060530147004	
060530148001	060530148001000, 060530148001005, 060530148001034, 060530148001035, 060530148001050, 060530148001088
060530148002	
060530148003	

END OF APPENDIX B

APPENDIX C Resolution T-17429

Different Price Scenarios

Supporting Providers	Miles	Annual Supporting Providers Contribution@ \$8.50 / Mile / Month	Annual Supporting Providers Contribution@ \$11 / Mile / Month	Annual Supporting Providers Contribution @ \$34 / Mile / Month
Last Mile Provider A Note: Sunesys estimates 15 Last Mile Providers/anchors will sign up for backhaul services	182.35	\$18,600	\$24,070	\$74,399
Total Annual Income from Service Providers (Based on 15 last miles providers/anchors obtaining backhaul)		\$278,996	\$361,053	\$1,115,982
Project Cost		\$13,300,000	\$13,300,000	\$13,300,000
60% Funding of total project costs of \$13,300,000		\$7,980,000	\$7,980,000	\$7,980,000
Differential		\$5,320,000	\$5,320,000	\$5,320,000
Payback Period (months)		228.8	176.8	57.2

90% Funding of total project costs of \$13,300,000	\$11,970,000
Differential	\$1,330,000
Payback Period (months)	57.2

80% Funding of total project costs of \$13,300,000	\$10,640,000
Differential	\$2,660,000
Payback Period (months)	14.41

END OF APPENDIX C

APPENDIX D

Resolution T-17429

Table 1 | Emergency First Responders' Agencies

SPECIFIC_U	NAME	SUBNAME		CITY	ZIP	County
Fire Station	SRFD	STATION 1	19900 PORTOLA DRIVE		93908	Monterey
Fire Station	FIRE ST # 2		582 HAWTHORNE STREET		93940	Monterey
Fire Station	CARMEL VALLEY FIRE DEPARTMENT		26 VIA CONTENTA		93924	Monterey
Fire Station	City of Monterey - Fire Station		401 DELA VINA AVENUE		93940	Monterey
Fire Station	CARMEL VALLEY FIRE DISTRICT	MID VALLEY STATION	8455 CARMEL VALLEY ROAD		93923	Monterey
Fire Station	NCFPD	STATION 1	11200 SPEEGLE STREET		95012	Monterey
Fire Station	NCFPD	STATION 2	17639 PESANTE ROAD			Monterey
Fire Station	NCFPD	STATION 3	301 ELKHORN ROAD			Monterey
Fire Station	CAL FIRE	AROMAS	492 CARPENTERIA ROAD			Monterey
Fire Station	CAL FIRE	CARMEL HILL	4180 17 MILE DRIVE			Monterey
Fire Station	CAL FIRE	KING CITY	743 REICH STREET			Monterey
Fire Station	CAL FIRE	PEBBLE BEACH	3101-B FOREST LAKE ROAD			Monterey
Fire Station	CAL FIRE	RIO ROAD	3775 RIO ROAD			Monterey
Fire Station	CAL FIRE	GONZALES	HWY 101			Monterey
Fire Station	MARINA FIRE DEPARTMENT	MARINA	211 HILLCREST AVE			Monterey
Fire Station	SEASIDE FIRE DEPARTMENT	SEASIDE	1635 BROADWAY AVE			Monterey
Fire Station	GONZALES FIRE DEPARTMENT	GONZALES	325 CENTER ST			Monterey
Law Enforcement	SALINAS POLICE DEPARTMENT		113 CENTRAL AVE	SALINAS		Monterey
Law Enforcement	MONTEREY COUNTY SHERIFF		1414 NATIVIDAD ROAD	SALINAS		Monterey
Law Enforcement	CALIFORNIA HIGHWAY PATROL		960 EAST BLANCO ROAD	SALINAS		Monterey
Law Enforcement	MONTEREY COUNTY SHERRIFF		1200 AGUAJITO ROAD #002	MONTEREY		Monterey
Law Enforcement	MONTEREY POLICE DEPARTMENT		351 MADISON STREET	MONTEREY		Monterey
Law Enforcement	SEASIDE POLICE DEPARTMENT		440 HARCOURT AVE	SEASIDE		Monterey
Law Enforcement	SEASIDE POLICE DEPARTMENT		986 HILBY AVE	SEASIDE		Monterey
Law Enforcement	MONTEREY COUNTY COURTHOUSE		1200 AGUAJITO ROAD	MONTEREY		Monterey
Law Enforcement	SAND CITY POLICE DEPT		1 SYLVAN WAY	SAND CITY		Monterey
Law Enforcement	MONTEREY COUNTY SHERRIFF		240 CHURCH ST	SALINAS		Monterey
Law Enforcement	PACIFIC GROVE POLICE DEPARTMENT		580 PINE AVE	PACIFIC GROVE		Monterey
Law Enforcement	DEL REY OAKS POLICE DEPARTMENT		650 CANYON DEL REY BLVD	MONTEREY		Monterey
Law Enforcement	CITY OF SOLEDAD POLICE DEPARTMENT		236 MAIN STREET	SOLEDAD		Monterey
Law Enforcement	KING CITY POLICE DEPARTMENT		415 BASSETT STREET	KING CITY		Monterey
Law Enforcement	GREENFIELD POLICE DEPARTMENT		215 EL CAMINO REAL	GREENFIELD		Monterey
Law	KING CITY CHP		2 BROADWAY CIRCLE	KING CITY		Monterey

Resolution T-17429
CD/SIM

Enforcement						
Law Enforcement	MONTEREY COUNTY SHERRIFF		250 FRANCISCAN WAY	KING CITY		Monterey
Law Enforcement	CSUMB CAMPUS POLICE		BUILDING 82, 3RD ST	SEASIDE		Monterey
Law Enforcement	MARINA POLICE DEPARTMENT		211 HILLCREST AV	MARINA		Monterey
Law Enforcement	GONZALES PD		109 4TH ST	GONZALE S		Monterey
Fire Station	Big Creek FFS	Stn. 33	240 Swanton Rd.	Davenport	95017	Santa Cruz
Fire Station	Burrell FFS	stn. 47	25050 Highland Way	Los Gatos	95030	Santa Cruz
Fire Station	Corralitos FFS	Stn. 41	120 Eureka Canyon Rd.	Watsonville	95076	Santa Cruz
Fire Station	Cordilleras FFS	Stn. 18	300 Edmonds Rd.	Redwood City	94062	Santa Cruz
Fire Station	Felton FFS	stn. 31	6059 Highway 9	Felton	95018-0316	Santa Cruz
Fire Station	Jamison Creek FFS	stn. 23	16115 Jamison Creek Rd.	Boulder Creek	(831)338-4422	Santa Cruz
Fire Station	Pajaro Dunes FFS	Stn. 42	2661 Beach Rd.	Watsonville	95076	Santa Cruz
Fire Station	Pescadero FFS	Stn. 59	1200 Pescadero Rd.	Pescadero	94060	Santa Cruz
Fire Station	Skylonda FFS	Stn. 58	17290 Skyline Blvd.	Woodside	94062	Santa Cruz
Fire Station	Soquel FFS	Stn. 43	4750 Old San Jose Rd.	Soquel	95073	Santa Cruz
Fire Station	Soquel Demo State Forest		4750 Old San Jose Rd.	Soquel	95073	Santa Cruz
Fire Station	Ben Lomond Camp	Stn. 80	13575 Empire Grade Rd.	Santa Cruz	95060	Santa Cruz
Fire Station	Pajaro Valley Fire Protection District	Stn. 61	762 Casserly Rd.	Watsonville	95076	Santa Cruz
Fire Station	Bonny Doon	Co. 32	975 Martin Rd.	Santa Cruz	95060	Santa Cruz
Fire Station	Bonny Doon	Co. 34	7276 Empire Grade Rd	Santa Cruz	95060	Santa Cruz
Fire Station	Davenport	Co. 37	75 Marine View Ave	Santa Cruz	95060	Santa Cruz
Fire Station	Paradise Park	Co. 38	211 Keystone Way	Santa Cruz	95060	Santa Cruz
Fire Station	MBA	Co. 46	783 San Andreas Rd.	La Selva Beach	95076	Santa Cruz
Fire Station	Saratoga Summit	Stn. 21	12900 Skyline Blvd.	Los Gatos	95030	Santa Cruz
Fire Station	Las Cumbres	Co. 26	18271 Las Cumbres Rd.	Los Gatos	95030	Santa Cruz
Fire Station	Mount Madonna	Stn. 62	445 Summit Rd			Santa Cruz
Fire Station	Loma Prieta	Stn. 44	17445 Old Summit Rd	Los Gatos		Santa Cruz
Fire Station	Watsonville 2	WTS 2	370 Airport Blvd	Watsonville	95076	Santa Cruz
Fire Station	Scotts Valley 1	SCO 1	7 Erba Ln	Scotts Valley	95066	Santa Cruz
Fire Station	Central 2	CTL 2	3445 Thurber Ln	Santa Cruz	95065	Santa Cruz
Fire Station	Central 3	CTL 3	4747 Soquel Dr	Santa Cruz	95073	Santa Cruz
Fire Station	Central 4	CTL 4	405 Capitola Av	Capitola	95010	Santa Cruz
Fire Station	Central 1	CTL 1	930 17th Av	Santa Cruz	95062	Santa Cruz
Fire Station	Watsonville 1	WTS 1	115 Second St	Watsonville	95076	Santa Cruz
Fire Station	Boulder Creek 1	BOU 1	12230 Central Av	Boulder Creek	95006	Santa Cruz
Fire Station	Felton 1	FEL 1	131 Kirby St	Felton	95018	Santa Cruz
Fire Station	Branciforte 1	BRN 1	2711 Branciforte Dr	Santa	95065	Santa Cruz

Resolution T-17429
CD/SIM

				Cruz		
Fire Station	Aptos LaSelva 3	APT 3	312 Estrella AV	LaSelva Bch	95076	Santa Cruz
Fire Station	Aptos LaSelva 2	APT 2	300 Bonita Dr	LaSelva Bch	95003	Santa Cruz
Fire Station	Aptos LaSelva 1	APT 1	6934 Soquel Dr	Aptos	95003	Santa Cruz
Fire Station	Ben Lomond 1	BEN 1	9430 Highway 9	Ben Lomond	95005	Santa Cruz
Fire Station	Santa Cruz City 3	SCZ 3	335 Younglove Av	Santa Cruz	95060	Santa Cruz
Fire Station	Santa Cruz City 2	SCZ 2	1103 Soquel Av	Santa Cruz	95062	Santa Cruz
Fire Station	Zayante 1	ZAY 1	7700 East Zayante Rdf	Felton	95018	Santa Cruz
Fire Station	UCSC 1	UCZ 1	1156 High St	Santa Cruz	95064	Santa Cruz
Fire Station	Santa Cruz City 1	SCZ 1	711 Center St	Santa Cruz	95060	Santa Cruz
Fire Station	Zayante 2	ZAY 2	x-streets: Lompico at C			Santa Cruz
Fire Station	Branciforte 2	BRN 2	310 Rider Ridge Rd	Santa Cruz	95065	Santa Cruz
Fire Station	Scotts Valley 3	SCO 3	251 Glenwood Dr	Scotts Valley	95066	Santa Cruz
Fire Station	Zayante 3	ZAY 3	15585 Upper Zayante Rd			Santa Cruz
Police Station	Watsonville Police Station		215 Union St	Watsonville		Santa Cruz
Police Sub-Station	Watsonville High School Police Sub-Station		250 East Beach St	Watsonville		Santa Cruz
Police Sub-Station	Pajaro Valley High School Police Sub-Station		500 Harkins Slough Rd	Watsonville		Santa Cruz
Police Sub-Station	East Lake Village Shopping Center Police Sub-Station		936 East Lake Ave	Watsonville		Santa Cruz
Police Sub-Station	Police Activities League Facility		130 Rodriguez St	Watsonville		Santa Cruz
Police Sub-Station	Freedom Library Police Sub-Station		2021 Freedom Blvd	Watsonville		Santa Cruz
Police Station	City of Santa Cruz Police		155 Center St	Santa Cruz		Santa Cruz
Police Station	Capitola Police Station		422 Capitola Ave	Capitola		Santa Cruz
Police Station	Scotts Valley Police Station		1 Civic Center Dr	Scotts Valley		Santa Cruz
Main Office	Santa Cruz Sheriff		701 Ocean St, Room 340	Santa Cruz		Santa Cruz
Service Center	Santa Cruz Sheriff - Aptos Service Center		19 D Rancho Del Mar	Aptos		Santa Cruz
Detention Center	Santa Cruz Sheriff - Roundtree Men's Facility		90 Roundtree Ln	Watsonville		Santa Cruz
Service Center	Santa Cruz Sheriff - South County Service Center		790 Green Valley Rd	Watsonville		Santa Cruz
Service Center	Santa Cruz Sheriff - Rural Crimes Center		562 Casserly Rd	Watsonville		Santa Cruz
Service Center	Santa Cruz Sheriff - Blaine St Women's Center		144 Blaine St	Santa Cruz		Santa Cruz
Service Center	Santa Cruz Sheriff - Live Oak/Soquel Service Center		870 B 17th Ave	Santa Cruz		Santa Cruz
Detention Center	Santa Cruz Sheriff - Main Jail		259 Water St	Santa Cruz		Santa Cruz
Service Center	Santa Cruz Sheriff - San Lorenzo Valley Service Center		6059 Highway 9	Felton		Santa Cruz
Service Center	Santa Cruz Sheriff - Summit Service Center		23800 Summit Rd	Los Gatos		Santa Cruz

Table 2 | Community Anchor Institutions

ANCHORNAME	ADDRESS	CITY	STATE	ZIP
ABOVE THE LINE -GROUP HOME SOCIETY	2716 FREEDOM BLVD.	CORRALITOS	CA	95076
ALISAL COMMUNITY	1437 DEL MONTE AVE	SALINAS	CA	93905
ALISAL HIGH	777 WILLIAMS RD	SALINAS	CA	93905
ALISAL UNION	1205 EAST MARKET STREET	SALINAS	CA	93905
ALL SAINTS EPISCOPAL DAY SCHOOL	8060 CARMEL VALLEY RD.	CARMEL	CA	93923
ALTERNATIVE FAMILY EDUCATION	185 BENITO AVE	SANTA CRUZ	CA	95062
AMERICAN RED CROSS, SANTA CRUZ COUNTY CHAPTER	2960 SOQUEL AVENUE	SANTA CRUZ	CA	95062
AMERICAN RED CROSS-MONTEREY CO., CA	942 LUPIN DRIVE	SALINAS	CA	93906
AMESTI ELEMENTARY	25 AMESTI RD	WATSONVILLE	CA	95076
ANN SOLDO ELEMENTARY	1140 MENASCO DR	WATSONVILLE	CA	95076
APTOS HIGH	7301 FREEDOM BLVD	APTOS	CA	95003
APTOS JUNIOR HIGH	1001 HUNTINGTON DR	APTOS	CA	95003
ARK INDEPENDENT STUDIES	840 NORTH BRANCIFORTE AVE	SANTA CRUZ	CA	95062
AROMAS	365 VEGA ST	AROMAS	CA	95004
AUDUBON CANYON RANCH, INC.(13935 SONOMA HWY.)	13935 SONOMA HIGHWAY 12	STINSON BEACH	CA	94970
BARDIN ELEMENTARY	425 BARDIN RD	SALINAS	CA	93905
BARRIOS UNIDOS INC.	1817 SOQUEL AVE.	SANTA CRUZ	CA	95060
BAY VIEW ELEMENTARY	1231 BAY ST	SANTA CRUZ	CA	95060
BAY VIEW ELEMENTARY	680 BELDEN	MONTEREY	CA	93940
BIG BROTHERS BIG SISTERS OF SANTA CRUZ COUNTY	1500 41ST AVENUE, SUITE 250	CAPITOLA	CA	95010
BIG SUR CHARTER SCHOOL	47540 HIGHWAY 1	BIG SUR	CA	93920
BIG SUR HEALTH CENTER	46896 HIGHWAY 1	BIG SUR	CA	93920
BITTERWATER-TULLY ELEMENTARY	10 LONOAK RD	KING CITY	CA	93930
BITTERWATER-TULLY UNION ELEMENTARY	45980 AIRLINE HWY,, STATE HIGHWAY 25	KING CITY	CA	93930
BITTERWATER-TULLY UNION ELEMENTARY SCHOOL DISTRICT	LONOAK ROUTE BOX 10	KING CITY	CA	93930
BONNY DOON ELEMENTARY	1492 PINE FLAT RD	SANTA CRUZ	CA	95060
BONNY DOON UNION ELEMENTARY	1492 PINE FLAT ROAD	SANTA CRUZ	CA	95060
BORONDA COMMUNITY DAY	1114 FONTES LN	SALINAS	CA	93907
BORONDA MEADOWS	915 LARKIN ST	SALINAS	CA	93907
BOULDER CREEK ELEMENTARY	400 LOMOND ST	BOULDER CREEK	CA	95006
BOULDER CREEK ELEMENTARY SCHOOL	400 LOMOND ST.	BOULDER CREEK	CA	95006
BRADLEY ELEMENTARY	321 CORRALITOS RD	WATSONVILLE	CA	95076
BRADLEY ELEMENTARY	65600 DIXIE ST	BRADLEY	CA	93426
BRADLEY UNION ELEMENTARY	224 DIXIE STREET	BRADLEY	CA	93426
BRANCIFORTE MIDDLE	315 POPLAR ST	SANTA CRUZ	CA	95062
BROOK KNOLL ELEMENTARY	151 BROOK KNOLL DR	SANTA CRUZ	CA	95060
BUENA VISTA MIDDLE	18250 TARA DR	SALINAS	CA	93908
C. T. ENGLISH MIDDLE	23800 SUMMIT RD	LOS GATOS	CA	95033
CABRILLO COLLEGE	6500 SOQUEL DRIVE	APTOS	CA	95003
CALABASAS ELEMENTARY	202 CALABASAS RD	WATSONVILLE	CA	95076
CALIFORNIA RURAL LEGAL ASSISTANCE, INC.	2100 GARDEN ROAD, SUITE D	MONTEREY	CA	93940
CALIFORNIA RURAL LEGAL ASSISTANCE, INC. (3 WILLIAMS RD.)	3 WILLIAMS ROAD	SALINAS	CA	93905
CALIFORNIA RURAL LEGAL ASSISTANCE, INC. (501 SOQUEL AVE.)	501 SOQUEL AVE., SUITE D	SANTA CRUZ	CA	95062
CALIFORNIA RURAL LEGAL ASSISTANCE, INC.(21 CARR ST.)	21 CARR STREET	WATSONVILLE	CA	95076
CANDY BUTLER HIGH	760 BROADWAY ST	KING CITY	CA	93930
CAPTAIN COOPER ELEMENTARY	HWY 1	BIG SUR	CA	93920
CARMEL ADULT	8421 CARMEL VALLEY ROAD	CARMEL	CA	93923
CARMEL HIGH	3600 OCEAN AVE	CARMEL	CA	93923
CARMEL MIDDLE	4380 CARMEL VALLEY RD	CARMEL	CA	93922
CARMEL RIVER ELEMENTARY	MONTE VERDE ST AND 15TH AVE	CARMEL	CA	93923
CARMEL UNIFIED	4380 CARMEL VALLEY ROAD	CARMEL	CA	93923
CARMEL VALLEY HIGH	27335 SCHULTE RD	CARMEL	CA	93923
CARR LAKE COMMUNITY DAY	10 SHERWOOD PLACE	SALINAS	CA	93906

Resolution T-17429
CD/SIM

CASTROVILLE ELEMENTARY	11161 MERRITT ST	CASTROVILLE	CA	95012
CENTER FOR COMMUNITY ADVOCACY	22 WEST GABILAN STREET	SALINAS	CA	93901
CENTER FOR EMPLOYMENT TRAINING	10 BLANCA LANE	WATSONVILLE	CA	95076
CENTER FOR EMPLOYMENT TRAINING	930 LOS COCHES DRIVE	SOLEDAD	CA	93960
CENTER FOR EMPLOYMENT TRAINING	421 MONTEREY STREET	SALINAS	CA	93901
CENTRAL BAY HIGH (CONTINUATION)	17500 PESANTE RD	SALINAS	CA	93907
CENTRAL COAST CENTER FOR INDEPENDENT LIVING	234 CAPITOL ST. STE. A	SALINAS	CA	93901
CENTRAL COAST CENTER FOR INDEPENDENT LIVING	234 CAPITOL ST. SUITE A	SALINAS	CA	93901
CENTRAL COAST HIGH	225 NORMANDY RD	SEASIDE	CA	93955
CENTRAL COAST VNA & HOSPICE, INC.	P.O. BOX 2480	MONTEREY	CA	93942
CENTRAL COAST YMCA	117 CLAY ST	SALINAS	CA	93901
CENTRAL COAST YMCA	600 CAMINO EL ESTERO	MONTEREY	CA	93940
CENTRAL COAST YMCA	27 SUDDEN ST	WATSONVILLE	CA	95076
CENTRAL COAST YMCA	560 N WALKER DR	SOLEDAD	CA	93960
CENTRAL COAST YMCA (HOLLISTER BRANCH)	351 TRES PINES ROAD	SALINAS	CA	93901
CESAR CHAVEZ ELEMENTARY	250 APPLE AVE	GREENFIELD	CA	93927
CESAR E. CHAVEZ ELEMENTARY	1225 TOWT ST	SALINAS	CA	93905
CESAR E. CHAVEZ MIDDLE	440 ARTHUR RD	WATSONVILLE	CA	95076
CHALONE HIGH	690 MAIN ST	SOLEDAD	CA	93960
CHALONE PEAKS MIDDLE	667 MEYER ST	KING CITY	CA	93930
CHARTWELL SCHOOL	1490 IMPERIAL ST.	SEASIDE	CA	93955
CHILD DEVELOPMENT INC	440 JAYNE	KING CITY	CA	93930
CHUALAR ELEMENTARY	24285 LINCOLN ST	CHUALAR	CA	93925
CHUALAR UNION	24285 LINCOLN STREET	CHUALAR	CA	93925
CHUALAR UNION ELEMENTARY SCHOOL DISTRICT	P.O. BOX 188	CHUALAR	CA	93925
CLINIC DE SALUD DEL VALLE DE SALINAS-KING CITY CLINIC	223 BASSET STREET	SALINAS	CA	93905
CLINICA DE SALUD DEL VALLE DE SALINAS - SANBORN CLINIC	219 N SANBORN RD	SALINAS	CA	93905
CLINICA DE SALUD DEL VALLE DE SALINAS-ALVIN CLINIC	620 E. ALVIN DRIVE, SUITE G	SALINAS	CA	93905
CLINICA DE SALUD DEL VALLE DE SALINAS-CASTROVILLE CLINIC	10561 MERRITT STREET	SALINAS	CA	93905
CLINICA DE SALUD DEL VALLE DE SALINAS-CIRCLE CLINIC	950 CIRCLE DRIVE	SALINAS	CA	93905
CLINICA DE SALUD DEL VALLE DE SALINAS-GREENFIELD CLINIC	808 OAK AVENUE	SALINAS	CA	93905
CLINICA DE SALUD DEL VALLE DE SALINAS-SANBORN CLINIC	219 N. SANBORN ROAD	SALINAS	CA	93905
CLINICA DE SALUD DEL VALLE DE SALINAS-SOLEDAD CLINIC	799 FRONT STREET	SALINAS	CA	93905
COMMUNITY ACTION BOARD	150 CHURCH	DAVENPORT	CA	95017
COMMUNITY ACTION BOARD	406 MAIN ST # 207	WATSONVILLE	CA	95077
COMMUNITY ACTION BOARD	406 MAIN	WATSONVILLE	CA	95076
COMMUNITY ACTION BOARD	501 SOQUEL AVE	SANTA CRUZ	CA	95062
COMMUNITY ACTION BOARD OF SANTA CRUZ COUNTY, INC.	406 MAIN STREET, SUITE 207	WATSONVILLE	CA	95076
COMMUNITY ACTION BOARD OF SANTA CRUZ COUNTY, INC. (CAPITOLA ROAD EXRENSION)	522 CAPITOLA ROAD EXTENSION	WATSONVILLE	CA	95076
COMMUNITY ACTION BOARD OF SANTA CRUZ COUNTY, INC. (CENTER STREET)	81 CENTER STREET	WATSONVILLE	CA	95076
COMMUNITY ACTION BOARD OF SANTA CRUZ COUNTY, INC. (CHURCH STREET)	151 CHURCH STREET	WATSONVILLE	CA	95076
COMMUNITY ACTION BOARD OF SANTA CRUZ/GEMMA	522 CAPITOLA RD EXT	SANTA CRUZ	CA	95062
COMMUNITY BRIDGES	236 SANTA CRUZ AVENUE	APTOS	CA	95003
COMMUNITY FOUNDATION OF SANTA CRUZ COUNTY	7807 SOQUEL DRIVE	APTOS	CA	95003
COMMUNITY FOUNDATION OF SANTA CRUZ COUNTY/DAVID B. LOVE	1220 41ST AVE STE I	CAPITOLA	CA	95010
COMMUNITY HIGH (CONTINUATION)	1004 DAVID AVE	PACIFIC GROVE	CA	93950
COMMUNITY HUMAN SERVICES	2560 GARDEN ROAD	MONTEREY	CA	93942
COSTANOA CONTINUATION HIGH	840 NORTH BRANCIFORTE AVE	SANTA CRUZ	CA	95062
COUNTY OF MONTEREY BRADLEY LIBRARY	26 CENTRAL AVENUE	SALINAS	CA	93901
COUNTY OF MONTEREY CASTROVILLE LIBRARY	26 CENTRAL AVENUE	SALINAS	CA	93901
COUNTY OF MONTEREY KC LIBRARY CKT.	26 CENTRAL AVENUE	SALINAS	CA	93901
COUNTY OF MONTEREY PAJARO LIBRARY	26 CENTRAL AVENUE	SALINAS	CA	93901
COUNTY OF MONTEREY SAN ARDO LIBRARY	26 CENTRAL AVENUE	SALINAS	CA	93901
COUNTY OF MONTEREY LIBRARIES FRAME RELAY	26 CENTRAL AVENUE	SALINAS	CA	93901
COUNTY OF SANTA CRUZ HEALTH SERVICES AGENCY	12 W. BEACH ST.	WATSONVILLE	CA	95076

Resolution T-17429
CD/SIM

CREEKSIDE ELEMENTARY	1770 KITTELY ST	SALINAS	CA	93906
DE LAVEAGA ELEMENTARY	1145 MORRISSEY BLVD	SANTA CRUZ	CA	95065
DEAF AND HARD OF HEARING SERVICE CENTER, INC.(PAJARO ST., SALINAS)	339 PAJARO STREET, SUITE B	SALINAS	CA	93901
DEL MAR ELEMENTARY	1959 MERRILL ST	SANTA CRUZ	CA	95062
DEL REY ELEMENTARY	502 KING ST	KING CITY	CA	93930
DEL REY WOODS ELEMENTARY	1281 PLUMAS AVE	SEASIDE	CA	93955
DIENTES COMMUNITY DENTAL CARE	1830 COMMERCIAL WAY	SANTA CRUZ	CA	95065
DR. MARTIN LUTHER KING, JR. ACADEMY	925 NORTH SANBORN RD	SALINAS	CA	93905
E. A. HALL MIDDLE	201 BREWINGTON AVE	WATSONVILLE	CA	95076
EASTER SEALS CENTRAL CALIFORNIA	9010 SOQUEL DRIVE	APTOS	CA	95003
EASTER SEALS CENTRAL CALIFORNIA (HIGHWAY 9, BOULDER CREEK, CA)	16403 HIGHWAY 9	APTOS	CA	95003
ECHO VALLEY ELEMENTARY	147 ECHO VALLEY RD	SALINAS	CA	93907
ECOLOGY ACTION OF SANTA CRUZ (211 RIVER STREET)	211 RIVER STREET	SANTA CRUZ	CA	95061
EL GABILAN ELEMENTARY	1256 LINWOOD DR	SALINAS	CA	93906
EL PAJARO COMMUNITY DEVELOPMENT CORPORATION	23 E. BEACH ST. STE. 209	WATSONVILLE	CA	95076
EL SAUSAL MIDDLE	1155 EAST ALISAL ST	SALINAS	CA	93905
ELKHORN ELEMENTARY	2235 ELKHORN RD	CASTROVILLE	CA	95012
ESALEN INSTITUTE	HIGHWAY 1	BIG SUR	CA	93920
EVERETT ALVAREZ HIGH	1900 INDEPENDENCE BLVD	SALINAS	CA	93906
FAIRVIEW MIDDLE	401 FOURTH ST	GONZALES	CA	93926
FAMILY SERVICE AGENCY OF THE CENTRAL COAST	104 WALNUT AVENUE, #208	SANTA CRUZ	CA	95060
FISHWISE (500 SEABRIGHT AVE., SANTA CRUZ)	500 SEABRIGHT AVENUE, SUITE 201	SANTA CRUZ	CA	95061
FITCH MIDDLE SCHOOL	P.O. BOX 1031	MONTEREY	CA	93942
FOOD BANK FOR MONTEREY COUNTY	815 W MARKET	SALINAS	CA	93901
FOOTHILL ELEMENTARY	1700 VIA CASOLI	MONTEREY	CA	93940
FOREST GROVE ELEMENTARY	1065 CONGRESS AVE	PACIFIC GROVE	CA	93950
FRANK LEDESMA ELEMENTARY	973 VISTA DE SOLEDAD	SOLEDAD	CA	93960
FRANK PAUL ELEMENTARY	1300 RIDER AVE	SALINAS	CA	93905
FREEDOM ELEMENTARY	25 HOLLY DR	FREEDOM	CA	95019
FREMONT ELEMENTARY	1255 EAST MARKET ST	SALINAS	CA	93905
GABILAN ELEMENTARY	330 NORTH WALKER DR	SOLEDAD	CA	93960
GATEWAY CENTER OF MONTEREY COUNTY, INC.	850 CONGRESS AVENUE	PACIFIC GROVE	CA	93950
GATEWAY SCHOOL	126 EUCALYPTUS AVE.	SANTA CRUZ	CA	95060
GAULT ELEMENTARY	1320 SEABRIGHT AVE	SANTA CRUZ	CA	95062
GAVILAN VIEW MIDDLE	18250 VAN BUREN AVE	SALINAS	CA	93906
GEORGE C. MARSHALL ELEMENTARY	300 NORMANDY RD	SEASIDE	CA	93955
GEORGE L. MEE MEMORIAL HOSPITAL	300 CANAL	KING CITY	CA	93930
GEORGE L. MEE MEMORIAL HOSPITAL	467 EL CAMINO REAL	GREENFIELD	CA	93927
GEORGE L. MEE MEMORIAL HOSPITAL	210 CANAL STREET	KING CITY	CA	93930
GEORGE L. MEE MEMORIAL HOSPITAL (300 CANAL ST., KING CITY, CA)	300 CANAL STREET	KING CITY	CA	93930
GEORGE L. MEE MEMORIAL HOSPITAL (400 CANAL STREET, KING CITY, CA)	400 CANAL STREET	KING CITY	CA	93930
GONZALES EVENING HIGH	650 ELKO STREET	GONZALES	CA	93926
GONZALES HIGH	501 FIFTH ST	GONZALES	CA	93926
GONZALES UNIFIED	600 ELKO STREET	GONZALES	CA	93926
GOOD SHEPHERD CATHOLIC SCHOOL	2727 MATTISON LANE	SANTA CRUZ	CA	95065
GOODWILL INDUSTRIES OF SANTA CRUZ, MONTEREY & SAN LUIS OBISPO COUNTIES	350 ENCINAL ST	SANTA CRUZ	CA	92126
GOODWILL INDUSTRIES OF SANTA CRUZ, MONTEREY & SAN LUIS OBISPO COUNTIES	249 10TH ST	MARINA	CA	92126
GOODWILL INDUSTRIES OF SANTA CRUZ, MONTEREY & SAN LUIS OBISPO COUNTIES	1550 41ST AVE	CAPITOLA	CA	92126
GOODWILL INDUSTRIES OF SANTA CRUZ, MONTEREY & SAN LUIS OBISPO COUNTIES	708 E ALISAL ST	SALINAS	CA	92126
GOODWILL INDUSTRIES OF SANTA CRUZ, MONTEREY & SAN LUIS OBISPO COUNTIES	729 BROADWAY AVE	SEASIDE	CA	92126
GOODWILL INDUSTRIES OF SANTA CRUZ, MONTEREY & SAN	571 LIGHTHOUSE	MONTEREY	CA	92126

Resolution T-17429
CD/SIM

LUIS OBISPO COUNTIES				
GOODWILL INDUSTRIES OF SANTA CRUZ, MONTEREY & SAN LUIS OBISPO COUNTIES	1045 N MAIN ST	SALINAS	CA	92126
GOODWILL INDUSTRIES OF SANTA CRUZ, MONTEREY & SAN LUIS OBISPO COUNTIES	1252 N MAIN	SALINAS	CA	92126
GOODWILL INDUSTRIES OF SANTA CRUZ, MONTEREY & SAN LUIS OBISPO COUNTIES	470 MAIN ST	WATSONVILLE	CA	92126
GOODWILL INDUSTRIES OF SANTA CRUZ, MONTEREY & SAN LUIS OBISPO COUNTIES	266 RESERVATION RD	MARINA	CA	92126
GOODWILL INDUSTRIES OF SANTA CRUZ, MONTEREY & SAN LUIS OBISPO COUNTIES	204 UNION ST	SANTA CRUZ	CA	92126
GOODWILL INDUSTRIES OF SANTA CRUZ, MONTEREY & SAN LUIS OBISPO COUNTIES	103 WHISPERING PINES DR	SCOTTS VALLEY	CA	92126
GRAVES ELEMENTARY	15 MCFADDEN RD	SALINAS	CA	93908
GRAVES ELEMENTARY	15 MCFADDEN ROAD	SALINAS	CA	93908
GRAVES SCHOOL DISTRICT	BOX 885	SALINAS	CA	93902
GREEN ACRES ELEMENTARY	966 BOSTWICK LN	SANTA CRUZ	CA	95062
GREENFIELD ELEMENTARY	490 EL CAMINO REAL	GREENFIELD	CA	93927
GREENFIELD HIGH	225 SOUTH EL CAMINO REAL	GREENFIELD	CA	93927
GREENFIELD UNION ELEMENTARY	493 EL CAMINO REAL	GREENFIELD	CA	93927
H. A. HYDE ELEMENTARY	125 ALTA VISTA ST	WATSONVILLE	CA	95076
HALL DISTRICT ELEMENTARY	300 SILL RD	WATSONVILLE	CA	95076
HAPPY VALLEY ELEMENTARY	3125 BRANCIFORTE DR	SANTA CRUZ	CA	95065
HAPPY VALLEY ELEMENTARY	3125 BRANCIFORTE DRIVE	SANTA CRUZ	CA	95065
HARBOR HIGH	300 LA FONDA AVE	SANTA CRUZ	CA	95062
HARDEN MIDDLE	1561 MCKINNON ST	SALINAS	CA	93906
HARRISON MEMORIAL LIBRARY	P.O. BOX 800	CARMEL BY THE SEA	CA	93921
HARTNELL COLLEGE	411 CENTRAL AV	SALINAS	CA	93901
HARTNELL COMMUNITY COLLEGE - MAIN CAMPUS	411 CENTRAL AVENUE	SALINAS	CA	93901
HEALTH PROJECTS CENTER	1537 PACIFIC AVENUE, SUITE 300	SANTA CRUZ	CA	95060
HENRY F. KAMMANN ELEMENTARY	521 ROCHEX ST	SALINAS	CA	93906
HIGHLAND ELEMENTARY	1650 SONOMA AVE	SEASIDE	CA	93955
HOPE REHABILITATION SERVICES	220 LINCOLN ST	SANTA CRUZ	CA	95060
HOPE REHABILITATION SERVICES	19055 PORTOLA DR	SALINAS	CA	93908
HOPE REHABILITATION SERVICES	546 BRUNKEN AVE	SALINAS	CA	93901
HOPE REHABILITATION SERVICES	14 CARR ST	WATSONVILLE	CA	95076
HOPE REHABILITATION SERVICES	1580 DEL MONTE BLVD	SEASIDE	CA	93955
HOPE REHABILITATION SERVICES	8056 VALENCIA ST	APTOS	CA	95003
HOPE SERVICES	93 ROUNTREE LN	WATSONVILLE	CA	95076
HOPE SERVICES	1 UNIVERSITY WAY	MONTEREY	CA	93943
HOSPICE OF SANTA CRUZ COUNTY	940 DISC DRIVE	SCOTTS VALLEY	CA	95066
IMAGINE SUPPORTED LIVING SERVICES	1395 41ST AVENUE, SUITE A	CAPITOLA	CA	95010
IONE OLSON ELEMENTARY	261 BEACH RD	MARINA	CA	93933
J. C. CRUMPTON ELEMENTARY	460 CARMEL AVE	MARINA	CA	93933
JACK FRANSCIONI ELEMENTARY	779 ORCHARD LN	SOLEDAD	CA	93960
JANUS OF SANTA CRUZ	200 7TH AVENUE, #150	SANTA CRUZ	CA	95062
JESSE G. SANCHEZ ELEMENTARY	901 NORTH SANBORN RD	SALINAS	CA	93905
JOHN E. STEINBECK ELEMENTARY	1714 BURLINGTON DR	SALINAS	CA	93906
KING CITY ADULT	760 BROADWAY	KING CITY	CA	93930
KING CITY ELEMENTARY SD	435 PEARL ST RM 15	KING CITY	CA	93930
KING CITY HIGH	720 BROADWAY ST	KING CITY	CA	93930
KING CITY JOINT UNION HIGH	800 BROADWAY STREET	KING CITY	CA	93930
KING CITY UNION	435 PEARL STREET	KING CITY	CA	93930
KINSHIP CENTER	124 RIVER ROAD	SALINAS	CA	93908
LA GLORIA ELEMENTARY	220 ELKO ST	GONZALES	CA	93926
LA JOYA ELEMENTARY	55 ROGGE RD	SALINAS	CA	93906
LA MESA ELEMENTARY	1 LA MESA WAY	MONTEREY	CA	93940
LA PAZ MIDDLE	1300 NORTH SANBORN RD	SALINAS	CA	93905
LAGUNITA ELEMENTARY	975 SAN JUAN GRADE RD	SALINAS	CA	93907

Resolution T-17429
CD/SIM

LAGUNITA ELEMENTARY	975 SAN JUAN GRADE ROAD	SALINAS	CA	93907
LAKEVIEW MIDDLE	2350 EAST LAKE AVE	WATSONVILLE	CA	95076
LANDMARK ELEMENTARY	235 OHLONE PARKWAY	WATSONVILLE	CA	95076
LAUREL WOOD ELEMENTARY	645 LARKIN ST	SALINAS	CA	93907
LIBERTY FAMILY ACADEMY	8515 PRUNEDALE NORTH ROAD	PRUNEDALE	CA	93907
LINCOLN ELEMENTARY	705 CALIFORNIA ST	SALINAS	CA	93901
LIVE OAK ELEMENTARY	984 BOSTWICK LANE, SUITE 1	SANTA CRUZ	CA	95062
LIVE OAK ELEMENTARY	1916 CAPITOLA RD	SANTA CRUZ	CA	95062
LOMA PRIETA ELEMENTARY	23800 SUMMIT RD	LOS GATOS	CA	95033
LOMA PRIETA JOINT UNION ELEMENTARY	23800 SUMMIT ROAD	LOS GATOS	CA	95033
LOMA VISTA ELEMENTARY	757 SAUSAL DR	SALINAS	CA	93906
LOS ARBOLES MIDDLE	294 HILLCREST AVE	MARINA	CA	93933
LOS PADRES ELEMENTARY	1130 JOHN ST	SALINAS	CA	93905
LUTHERAN SOCIAL SERVICES OF SOUTHERN CA (PALMS HIGHWAY, JOSHUA TREE)	70478-29 PALMS HIGHWAY	ORANGE	CA	92867
MAIN STREET ELEMENTARY	3400 NORTH MAIN ST	SOQUEL	CA	95073
MAIN STREET MIDDLE	441 MAIN ST	SOLEDAD	CA	93960
MAR VISTA ELEMENTARY	6860 SOQUEL DR	APTOS	CA	95003
MARINA HIGH	298 PATTON PARKWAY	MARINA	CA	93933
MARINA VISTA ELEMENTARY	390 CARMEL AVE	MARINA	CA	93933
MARINA VISTA SCHOOL	390 CARMEL AVENUE	MARINA	CA	93933
MARTIN LUTHER KING	1713 BROADWAY	SEASIDE	CA	93955
MCKINNON	2100 MCKINNON	SALINAS	CA	93906
MEE MEMORIAL HOSPITAL	309 MUSTANG CT	KING CITY	CA	93930
MEE MEMORIAL HOSPITAL	809 WILLOW	KING CITY	CA	93930
MID COUNTY CHRISTIAN SCHOOL	2701 CABRILLO COLLEGE DRIVE	APTOS	CA	95003
MINTIE WHITE ELEMENTARY	515 PALM AVE	WATSONVILLE	CA	95076
MISSION ELEMENTARY	36825 FOOTHILL RD	SOLEDAD	CA	93960
MISSION HILL MIDDLE	425 KING ST	SANTA CRUZ	CA	95060
MISSION PARK ELEMENTARY	403 WEST ACACIA ST	SALINAS	CA	93901
MISSION UNION ELEMENTARY	36825 FOOTHILL ROAD	SOLEDAD	CA	93960
MONTEREY ADULT/ROP	222 CASA VERDE WAY	MONTEREY	CA	93940
MONTEREY BAY ACADEMY	783 SAN ANDREAS ROAD	LA SELVA BEACH	CA	95076
MONTEREY BAY CHARTER SCHOOL	1004-B DAVID AVENUE	PACIFIC GROVE	CA	93950
MONTEREY COUNTY FREE LIBRARIES	550 HARCOURT AV	SEASIDE	CA	93955
MONTEREY COUNTY FREE LIBRARIES	188 SEASIDE CIR	MARINA	CA	93933
MONTEREY COUNTY FREE LIBRARIES	11140 SPEEGLE	CASTROVILLE	CA	95012
MONTEREY COUNTY FREE LIBRARY	188 SEASIDE CIR	MARINA	CA	93933
MONTEREY COUNTY OFFICE OF EDUCATION	901 BLANCO CIRCLE	SALINAS	CA	93912
MONTEREY COUNTY OFFICE OF EDUCATION	P.O. BOX 80851	SALINAS	CA	93912
MONTEREY COUNTY SPECIAL EDUCATION	901 BLANCO CIRCLE	SALINAS	CA	93912
MONTEREY HIGH	101 HERRMANN DR	MONTEREY	CA	93940
MONTEREY PARK ELEMENTARY	410 SAN MIGUEL AVE	SALINAS	CA	93901
MONTEREY PENINSULA COLLEGE COMMUNITY COLLEGE DISTRICT	980 FREMONT STREET	MONTEREY	CA	93940
MONTEREY PENINSULA UNIFIED	700 PACIFIC STREET	MONTEREY	CA	93942
MONTEREY PENINSULA UNIFIED SCHOOL DIST.	P.O. BOX 1031	MONTEREY	CA	93942
MONTEREY PENINSULA UNIFIED SCHOOL DISTRICT COMMUNI	700 PACIFIC ST	MONTEREY	CA	93940
MONTEREY PENINSULA UNIFIED SCHOOL DISTRICT COMMUNI	700 PACIFIC ST	MONTEREY	CA	93940
MONTEREY PUBLIC LIBRARY	625 PACIFIC STREET	MONTEREY	CA	93940
MORELAND NOTRE DAME SCHOOL	133 BRENNAN STREET	WATSONVILLE	CA	95076
MOUNT MADONNA SCHOOL	445 SUMMIT ROAD	WATSONVILLE	CA	95076
MOUNT MADONNA SCHOOL	491 SUMMIT ROAD	WATSONVILLE	CA	95076
MOUNT TORO HIGH	10 SHERWOOD PLACE	SALINAS	CA	93906
MOUNTAIN ELEMENTARY	3042 OLD SAN JOSE RD	SOQUEL	CA	95073
MOUNTAIN ELEMENTARY	3042 OLD SAN JOSE ROAD	SOQUEL	CA	95073
NARCONON OF NORTHERN CALIFORNIA	262 GAFFEY RD.	WATSONVILLE	CA	95076
NATIONAL STEINBECK CENTER	1 MAIN STREET	SALINAS	CA	93901
NATIVIDAD ELEMENTARY	1465 MODOC AVE	SALINAS	CA	93906

Resolution T-17429
CD/SIM

NATIVIDAD MEDICAL CENTER	1441 CONSTITUTION BLVD.	SALINAS	CA	93906
NATIVIDAD MEDICAL CENTER	1441 CONSTITUTION BL	SALINAS	CA	93906
NATIVIDAD MEDICAL CENTER	1757 INDEPENDENCE BL	SALINAS	CA	93906
NEW BRIGHTON MIDDLE	250 WASHBURN AVE	CAPITOLA	CA	95010
NEW REPUBLIC ELEMENTARY	636 ARCADIA WAY	SALINAS	CA	93906
NEW SCHOOL COMMUNITY DAY	165 HARKINS SLOUGH RD	WATSONVILLE	CA	95076
NORTH MONTEREY COUNTY ADULT	17500 PESANTE ROAD	SALINAS	CA	93907
NORTH MONTEREY COUNTY CENTER FOR INDEPENDENT STUDY	17500 PESANTE RD	SALINAS	CA	93907
NORTH MONTEREY COUNTY HIGH	13990 CASTROVILLE BLVD	CASTROVILLE	CA	95012
NORTH MONTEREY COUNTY MIDDLE	10301 SEYMOUR ST	CASTROVILLE	CA	95012
NORTH MONTEREY COUNTY UNIFIED	8142 MOSS LANDING ROAD	MOSS LANDING	CA	95039
NORTH SALINAS HIGH	55 KIP DR	SALINAS	CA	93906
OAK AVENUE ELEMENTARY	1239 OAK AVE	GREENFIELD	CA	93927
OCEAN ALTERNATIVE EDUCATION CENTER	984 BOSTWICK LANE, SUITE 6	SANTA CRUZ	CA	95062
OHLONE ELEMENTARY	21 BAY FARMS RD	WATSONVILLE	CA	95076
O'NEILL SEA ODYSSEY	P.O. BOX 6300	SANTA CRUZ	CA	95063
ORD TERRACE ELEMENTARY	1755 LA SALLE AVE	SEASIDE	CA	93955
ORD TERRACE ELEMENTARY SCHOOL	P.O. BOX 1031	MONTEREY	CA	93942
OSCAR F. LOYA ELEMENTARY	1505 COUGAR DR	SALINAS	CA	93905
PACIFIC COAST CHRISTIAN ACADEMY	381 SAN JUAN GRADE ROAD	SALINAS	CA	93906
PACIFIC ELEMENTARY	50 OCEAN ST	DAVENPORT	CA	95017
PACIFIC ELEMENTARY	50 OCEAN STREET	DAVENPORT	CA	95017
PACIFIC GROVE ADULT	1025 LIGHTHOUSE AVENUE	PACIFIC GROVE	CA	93950
PACIFIC GROVE HIGH	615 SUNSET DR	PACIFIC GROVE	CA	93950
PACIFIC GROVE MIDDLE	835 FOREST AVE	PACIFIC GROVE	CA	93950
PACIFIC GROVE PUBLIC LIBRARY	550 CENTRAL AVE.	PACIFIC GROVE	CA	93950
PACIFIC GROVE UNIFIED	435 HILLCREST AVENUE	PACIFIC GROVE	CA	93950
PACIFIC GROVE UNIFIED SCHOOL DISTRICT	555 SINEX AVENUE	PACIFIC GROVE	CA	93950
PACIFIC UNIFIED	69325 HIGHWAY ONE	BIG SUR	CA	93920
PACIFIC UNIFIED SCHOOL DISTRICT	69325 HIGHWAY 1	BIG SUR	CA	93920
PACIFIC VALLEY (K-12)	69325 HWY ONE	BIG SUR	CA	93920
PAJARO MIDDLE	250 SALINAS RD	WATSONVILLE	CA	95076
PAJARO VALLEY HIGH	500 HARKINS SLOUGH RD	WATSONVILLE	CA	95076
PAJARO VALLEY UNIFIED	294 GREEN VALLEY ROAD	WATSONVILLE	CA	95076
PALMA HIGH SCHOOL	919 IVERSON ST.	SALINAS	CA	93901
PARKFIELD ELEMENTARY	70585 PARKFIELD COALINGA RD	SAN MIGUEL	CA	93451
PINNACLES HIGH	690 MAIN ST	SOLEDAD	CA	93960
PLANNED PARENTHOOD MAR MONTE, INC.	398 S GREEN VALLEY RD	WATSONVILLE	CA	92126
PLANNED PARENTHOOD MAR MONTE, INC.	625 HILBY AVE	SEASIDE	CA	92126
PLANNED PARENTHOOD MAR MONTE, INC.	316 N MAIN ST	SALINAS	CA	92126
PLANNED PARENTHOOD MAR MONTE, INC.	1119 PACIFIC AVE	SANTA CRUZ	CA	92126
PLANNED PARENTHOOD MAR MONTE, INC.	598 WALNUT AVE	GREENFIELD	CA	92126
PRISCILLA BOK LIBRARY	200 EIGHTH STREET	MARINA	CA	93933
PRUNEDALE ELEMENTARY	17719 PESANTE RD	SALINAS	CA	93907
RADCLIFF ELEMENTARY	550 RODRIGUEZ ST	WATSONVILLE	CA	95076
RENAISSANCE HIGH CONTINUATION	11 SPRING VALLEY RD	LA SELVA BEACH	CA	95076
RIO DEL MAR ELEMENTARY	819 PINEHURST DR	APTOS	CA	95003
RIVER VIEW HIGH	325 MARION AVENUE	BEN LOMOND	CA	95005
ROBERT DOWN ELEMENTARY	485 PINE AVE	PACIFIC GROVE	CA	93950
ROBERT LOUIS STEVENSON	3152 FOREST LAKE RD	PEBBLE BEACH	CA	93953
ROBERT LOUIS STEVENSON SCHOOL	3152 FOREST LAKE ROAD	PEBBLE BEACH	CA	93953
ROGER S. FITCH MIDDLE	999 COE AVE	SEASIDE	CA	93955
ROLLING HILLS MIDDLE	130 HERMAN AVE	WATSONVILLE	CA	95076
ROOSEVELT ELEMENTARY	120 CAPITOL ST	SALINAS	CA	93901
ROSE FERRERO ELEMENTARY	400 ENTRADA DR	SOLEDAD	CA	93960
SALINAS ADULT	20 SHERWOOD PLACE	SALINAS	CA	93906
SALINAS CITY ELEMENTARY	840 SOUTH MAIN STREET	SALINAS	CA	93901
SALINAS CITY SCHOOL DISTRICT	431 WEST ALISAL STREET	SALINAS	CA	93901
SALINAS COMMUNITY	1420 NATIVIDAD RD	SALINAS	CA	93906
SALINAS HIGH	726 SOUTH MAIN ST	SALINAS	CA	93901

Resolution T-17429
CD/SIM

SALINAS PUBLIC LIBRARY	110 WEST SAN LUIS STREET	SALINAS	CA	93901
SALINAS UNION HIGH	431 WEST ALISAL STREET	SALINAS	CA	93901
SALINAS UNION HIGH SCHOOL DISTRICT	431 W. ALISAL STREET	SALINAS	CA	93901
SALINAS VALLEY MEMORIAL HEALTHCARE SYSTEM	917 BLANCO CIR	SALINAS	CA	92126
SALINAS VALLEY MEMORIAL HEALTHCARE SYSTEM	945 BLANCO CIR	SALINAS	CA	92126
SALINAS VALLEY MEMORIAL HEALTHCARE SYSTEM	951 BLANCO CIR	SALINAS	CA	92126
SALINAS VALLEY MEMORIAL HEALTHCARE SYSTEM	133 FOURTH ST	GONZALES	CA	92126
SALINAS VALLEY MEMORIAL HEALTHCARE SYSTEM	8036 SAN MIGUEL CANYON RD	SALINAS	CA	92126
SALUD PARA LA GENTE	45 NIELSON STREET	WATSONVILLE	CA	95076
SALVATION ARMY (1491 CONTRA COSTA, SEASIDE, CA)	1491 CONTRA COSTA	MONTEREY	CA	93942
SALVATION ARMY (535 PALM AVE., SEASIDE, CA)	535 PALM AVE.	SEASIDE	CA	93955
SALVATION ARMY (720 LAUREL ST., SANTA CRUZ, CA)	720 LAUREL ST.	SANTA CRUZ	CA	95061
SALVATION ARMY (A BISHOP ST., WATSONVILLE, CA)	29-A BISHOP ST.	WATSONVILLE	CA	95076
SALVATION ARMY (ELM ST., SEASIDE, CA)	530 ELM STREET	SEASIDE	CA	93955
SALVATION ARMY (GRANT ST., WATSONVILLE, CA)	112 GRANT ST.	WATSONVILLE	CA	95077
SALVATION ARMY (SCOTT ST., SAND CITY, CA)	800 SCOTT ST.	MONTEREY	CA	93942
SALVATION ARMY (UNION ST., WATSONVILLE, CA)	232 UNION ST.	WATSONVILLE	CA	95076
SAN ANTONIO ELEMENTARY	67550 LOCKWOOD/JOLON RD	LOCKWOOD	CA	93932
SAN ANTONIO UNION ELEMENTARY	67550 LOCKWOOD/JOLON ROAD	LOCKWOOD	CA	93932
SAN ARDO ELEMENTARY	62428 CENTER ST	SAN ARDO	CA	93450
SAN ARDO UNION ELEMENTARY	62428 CENTER STREET	SAN ARDO	CA	93450
SAN BENANCIO MIDDLE	43 SAN BENANCIO RD	SALINAS	CA	93908
SAN LORENZO VALLEY ELEMENTARY	7155 HWY 9	FELTON	CA	95018
SAN LORENZO VALLEY HIGH	7105 HWY 9	FELTON	CA	95018
SAN LORENZO VALLEY HIGH SCHOOL	6134 HIGHWAY 9	FELTON	CA	95018
SAN LORENZO VALLEY MIDDLE	7179 HACIENDA WAY	FELTON	CA	95018
SAN LORENZO VALLEY UNIFIED	325 MARION AVENUE	BEN LOMOND	CA	95005
SAN LUCAS ELEMENTARY	53675 SAN BENITO ST	SAN LUCAS	CA	93954
SAN LUCAS UNION ELEMENTARY	53675 SAN BENITO STREET	SAN LUCAS	CA	93954
SAN VICENTE ELEMENTARY	1300 METZ RD	SOLEDAD	CA	93960
SANTA CATALINA SCHOOL	1500 MARK THOMAS DRIVE	MONTEREY	CA	93940
SANTA CRUZ ADULT	319 LA FONDA AVENUE	SANTA CRUZ	CA	95062
SANTA CRUZ CITY ELEMENTARY	405 OLD SAN JOSE ROAD	SOQUEL	CA	95073
SANTA CRUZ CITY ELEMENTARY ALTERNATIVE EDUCATION	840 NORTH BRANCIFORTE AVE	SANTA CRUZ	CA	95062
SANTA CRUZ CITY HIGH	405 OLD SAN JOSE ROAD	SOQUEL	CA	95073
SANTA CRUZ CITY SCHOOLS	2931 MISSION STREET	SANTA CRUZ	CA	95060
SANTA CRUZ CO. CYA DISTRICT BEN LOMOND YCC	13575 EMPIRE GRADE RD.	SANTA CRUZ	CA	95060
SANTA CRUZ COMMUNITY COUNSELING CENTER	1025 CENTER	SANTA CRUZ	CA	95060
SANTA CRUZ COMMUNITY COUNSELING CENTER	290 PIONEER	SANTA CRUZ	CA	95060
SANTA CRUZ COMMUNITY COUNSELING CENTER/ADMINISTRATIVE SERVICES	195 HARVEY WEST BLVD.	SANTA CRUZ	CA	95060
SANTA CRUZ COMMUNITY COUNSELING CENTER/CHILD AND FAMILY DEVELOPMENT PROGRAMS	408 EAST LAKE AVENUE	WATSONVILLE	CA	95076
SANTA CRUZ COMMUNITY COUNSELING CENTER/COMMUNITY RECOVERY SERVICES-ALTO FRONT	740 FRONT STREET	SANTA CRUZ	CA	95060
SANTA CRUZ COMMUNITY COUNSELING CENTER/COMMUNITY SUPPORT SERVICES-PIONEER HOUSE	290 PIONEER STREET	SANTZ CRUZ	CA	95060
SANTA CRUZ COMMUNITY COUNSELING CENTER/YOUTH SERVICES NORTH	709 MISSION STREET	SANTA CRUZ	CA	95060
SANTA CRUZ COUNTY COMMUNITY	400 ENCINAL ST	SANTA CRUZ	CA	95060
SANTA CRUZ COUNTY COURT	400 ENCINAL ST	SANTA CRUZ	CA	95060
SANTA CRUZ COUNTY LAW LIBRARY	701 OCEAN ST. RM 070	SANTA CRUZ	CA	95060
SANTA CRUZ COUNTY OFFICE OF EDUCATION	400 ENCINAL STREET	SANTA CRUZ	CA	95060
SANTA CRUZ COUNTY OFFICE OF EDUCATION	809-H BAY AVENUE	CAPITOLA	CA	95010
SANTA CRUZ COUNTY SPECIAL EDUCATION	400 ENCINAL ST	SANTA CRUZ	CA	95060
SANTA CRUZ GARDENS ELEMENTARY	8005 WINKLE AVE	SANTA CRUZ	CA	95065
SANTA CRUZ HIGH	415 WALNUT AVE	SANTA CRUZ	CA	95060
SANTA CRUZ MONTESSORI SCHOOL	6230 SOQUEL DRIVE	APTOS	CA	95003
SANTA CRUZ PUBLIC LIBRARIES	117 UNION ST	SANTA CRUZ	CA	95060
SANTA CRUZ WOMEN'S HEALTH CENTER	250 LOCUST ST	SANTA CRUZ	CA	95060

Resolution T-17429
CD/SIM

SANTA CRUZ WOMEN'S HEALTH CENTER	901 CENTER ST	SANTA CRUZ	CA	95060
SANTA CRUZ WOMEN'S HEALTH CENTER	911 CENTER ST	SANTA CRUZ	CA	95060
SANTA CRUZ WOMEN'S HEALTH CENTER	250 LOCUST ST	SANTA CRUZ	CA	95060
SANTA LUCIA ELEMENTARY	502 COLLINS ST	KING CITY	CA	93930
SANTA RITA ELEMENTARY	2014 SOUTH SANTA RITA ST	SALINAS	CA	93906
SANTA RITA UNION ELEMENTARY	57 RUSSELL ROAD	SALINAS	CA	93906
SCOTTS VALLEY HIGH	555 GLENWOOD DR	SCOTTS VALLEY	CA	95066
SCOTTS VALLEY MIDDLE	8 BEAN CREEK RD	SCOTTS VALLEY	CA	95066
SCOTTS VALLEY UNIFIED	4444 SCOTTS VALLEY DRIVE, SUITE 5B	SCOTTS VALLEY	CA	95066
SEASIDE HIGH	2200 NOCHE BUENA ST	SEASIDE	CA	93955
SHERWOOD ELEMENTARY	110 SOUTH WOOD ST	SALINAS	CA	93905
SHORELINE MIDDLE	855 17TH AVE	SANTA CRUZ	CA	95062
SOLEDAD ADULT	690 MAIN STREET	SOLEDAD	CA	93960
SOLEDAD HIGH	425 GABILAN DR	SOLEDAD	CA	93960
SOLEDAD UNIFIED	1261 METZ ROAD	SOLEDAD	CA	93960
SOMAVIA HIGH SCHOOL	650 ELKO ST	GONZALES	CA	93926
SOQUEL ELEMENTARY	2700 PORTER ST	SOQUEL	CA	95073
SOQUEL ELEMENTARY SCHOOL DISTRICT	620 MONTEREY AVENUE	CAPITOLA	CA	95010
SOQUEL HIGH	401 OLD SAN JOSE RD	SOQUEL	CA	95073
SOQUEL UNION ELEMENTARY	620 MONTEREY AVENUE	CAPITOLA	CA	95010
SPRECKELS ELEMENTARY	FOURTH ST AND HATTON AVE	SPRECKELS	CA	93962
SPRECKELS UNION ELEMENTARY	130 RAILROAD AVENUE	SPRECKELS	CA	93962
STARLIGHT ELEMENTARY	225 HAMMER DR	WATSONVILLE	CA	95076
SUN STREET CENTERS	11 PEACH DR	SALINAS	CA	93901
SUREPATH FINANCIAL SOLUTIONS	23 E BEACH ST A	WATSONVILLE	CA	92126
T. S. MACQUIDDY ELEMENTARY	330 MARTINELLI ST	WATSONVILLE	CA	95076
THE BAY SCHOOL	5400 SOQUEL AVE., SUITE F	SANTA CRUZ	CA	95062
TORO PARK ELEMENTARY	22500 PORTOLA DR	SALINAS	CA	93908
TRINITY YOUTH SERVICES (VICTORVILLE, CA)	15500 W. SAND STREET	COLTON	CA	92324
TULARCITOS ELEMENTARY	35 FORD RD	CARMEL VALLEY	CA	93924
UNITED WAY MONTEREY COUNTY	2511 GARDEN ROAD, C-100	MONTEREY	CA	93940
UNITED WAY MONTEREY COUNTY	376 SOUTH MAIN ST.	MONTEREY	CA	93940
UNIVERSITY PARK ELEMENTARY	833 WEST ACACIA ST	SALINAS	CA	93901
VALENCIA ELEMENTARY	250 APTOS SCHOOL RD	APTOS	CA	95003
VENTANA HIGH (CONTINUATION)	2015 EL CAMINO REAL	GREENFIELD	CA	93927
VINE HILL ELEMENTARY	151 VINE HILL SCHOOL RD	SCOTTS VALLEY	CA	95066
VIRGINIA ROCCA BARTON ELEMENTARY	680 LAS CASITAS DR	SALINAS	CA	93905
VISTA VERDE MIDDLE	1199 ELM AVE	GREENFIELD	CA	93927
VOLUNTEER CENTERS OF SANTA CRUZ COUNTY	1740 17TH AVE	SANTA CRUZ	CA	95062
WALNUT AVE. WOMEN'S CTR.	303 WALNUT AVE	SANTA CRUZ	CA	95060
WALNUT AVENUE WOMEN'S CENTER	303 WALNUT AVENUE	SANTA CRUZ	CA	95060
WALTER COLTON	100 TODA VISTA DR	MONTEREY	CA	93940
WASHINGTON ELEMENTARY	340 CORRAL DE TIERRA RD	SALINAS	CA	93908
WASHINGTON MIDDLE	560 IVERSON ST	SALINAS	CA	93901
WASHINGTON UNION ELEMENTARY	43 SAN BENANCIO ROAD	SALINAS	CA	93908
WATSONVILLE HIGH	250 EAST BEACH ST	WATSONVILLE	CA	95076
WATSONVILLE PUBLIC LIBRARY	310 UNION ST.	WATSONVILLE	CA	95076
WATSONVILLE/APTOS ADULT EDUCATION	294 GREEN VALLEY ROAD	WATSONVILLE	CA	95076
WELLINGTON M. SMITH, JR.	1420 NATIVIDAD RD	SALINAS	CA	93906
WESTLAKE ELEMENTARY	1000 HIGH ST	SANTA CRUZ	CA	95060
WOMAN'S CRISIS SUPPORT - DEFENSA DE MUJERES	220 E LAKE AVE	WATSONVILLE	CA	95076
WOMAN'S CRISIS SUPPORT - DEFENSA DE MUJERES	1570 SOQUEL AVE	SANTA CRUZ	CA	95065
WOMEN'S CRISIS CENTER	P.O. BOX 1805	SALINAS	CA	93902
WOMEN'S CRISIS SUPPORT-DEFENSA DE MUJERES	220 E. LAKE AVENUE	WATSONVILLE	CA	95076
Y.M.C.A OF SILICON VALLEY - METRO	16275 HIGHWAY 9	BOULDER CREEK	CA	95006
YORK SCHOOL	9501 YORK RD.	MONTEREY	CA	93940
YWCA OF WATSONVILLE (340 EAST BEACH ST.)	340 EAST BEACH STREET	WATSONVILLE	CA	95076

Table 3 | Public Safety Answering Points (PSAPs)

DESCRIPTION	ADDRESS	CITY	STATE	ZIP
Santa Cruz Regional 911 Center - SCCECC	495 Brookwood Dr	SANTA CRUZ	CA	95065
Santa Cruz County Office of Emergency Services	501 Brookwood Dr	SANTA CRUZ	CA	95065
Santa Cruz County Government Center	701 Ocean St	SANTA CRUZ	CA	95065
Watsonville Courthouse/Civic Center	1 Second St	WATSONVILLE	CA	95076
Santa Cruz County Health Services Agency	1080 Emeline Ave	SANTA CRUZ	CA	95065
Santa Cruz County Health Services Agency	1430 Freedom Blvd	WATSONVILLE	CA	95076
Monterey County Regional 911 Center - MCECC	1322 Natividad Rd	SALINAS	CA	93906
Monterey County Office of Emergency Services	1322 Natividad Rd	SALINAS	CA	93906