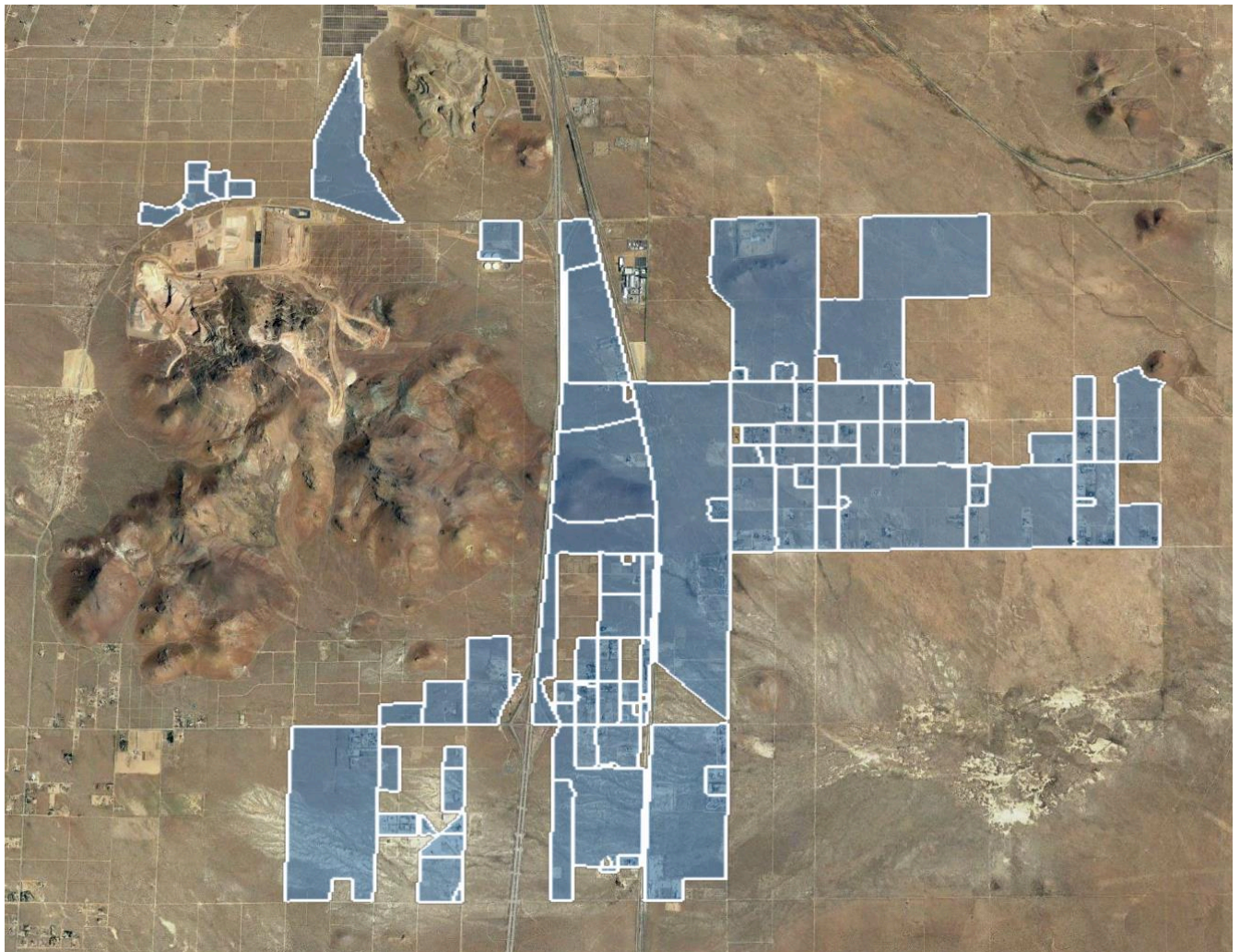


Project Summary

- **Applicant Information**
 - **Company/Applicant's Name:** Race Telecommunications, Inc.
 - **CPCN:** U7060C
 - **Contact:** Raul Alcaraz
 - **Project Title:** Gigafy Backus #2
 - **Proposed Project Location:** Mojave, California
 - **Project Type:** Last Mile
 - **CASF Grant Funding Requested:** \$4,702,649
 - **Total Project Cost:** \$5,878,312
- **Map of the proposed project area**



- **The number of unserved households with no-service and the number of unserved households with slow-service for which the project will provide service**
 - Unserved Households No-Service: 266 | Unserved Households Slow-Service: 0

- **If the project is requesting dial-up-only funding, it must state the number of households with dial-up-only service and the number of other CASF-eligible households**
 - Not Applicable

- **The maximum Mbps downstream and upstream speed currently offered to households**
 - Under 6Mbps downstream and 1Mbps upstream

- **Median household income of the project area**
 - \$40,059.85 (Census Block Weighted Average)

- **The number of businesses, anchor institutions and public safety locations in the project area that will receive new or improved service.**
 - N/A

- **A description of the major infrastructure to be deployed**
 - Race Telecommunications, Inc. is applying for CASF Funding to deploy a fiber -to-the-premises (FTTP) Last Mile network to serve 100% of the homes identified by the GPS coordinates in the defined service area that includes the city of Nevada City, California. Fiber based internet speeds will offer packages including 1Gbps (1000 Mbps) down and 1Gbps (1000 Mbps) up.

- **Estimated breakdown of aerial and underground installation**
 - 135,638 feet of aerial installation and 29,550 of underground installation.

- **Major equipment expenses**
 - Calix Electronics are the core and access equipment that will be deployed.

- **Estimated construction timeline**
 - Normal operating procedures plan for the project to be completed within 24 months from permitting with a phased rollout approach that allows customers to get installed as portions of the network are activated.

- **Description of proposed broadband project plan for which CASF funding is being requested, including the type of technology to be provided in the proposed service areas:**
 - **Download speed capabilities of proposed facilities.**
 - 1000Mbps

 - **Upload speed capabilities of proposed facilities.**
 - 1000Mbps

 - **Sufficient construction detail to enable a preliminary indication of the need for a**

California Environmental Quality Act (CEQA) review and if proposed project areas contains any environmentally sensitive areas.

Race’s approach to design is to provide low to no environmental impact by focusing on existing disturbed terrain that would allow for CEQA exemption.

- **Identification of the leveraging of existing available facilities**
Race will be leveraging the existing Race Mojave Air & Spaceport POP, that was previously in part funded via CASF Grant Resolution T-17279 (Mojave Air and Space Port). Race will also be leveraging existing Race fiber, that was previously in part funded via CASF Grant Resolution T-17480 (Gigafy Backus), which is feet away from the service area being proposed.

- **A statement of whether the applicant is disputing the Broadband Map depiction of served status.**
 - We are not disputing the BroadbandMap depiction of this area.

- **A statement of whether the applicant is seeking Ministerial Review and, if so, information that the application meets all requirements for Ministerial Review.**
 - We do not meet the criteria for Ministerial Review.

- **An explanation of why any Middle Mile facilities in the proposed project are “indispensable” for accessing the proposed last-mile infrastructure.**
 - N/A

Census Blocks

| Last Mile CB |
|---------------------|
| 060290065003591 |
| 060290065003643 |
| 060290065003642 |
| 060290065003641 |
| 060290065003543 |
| 060290065003903 |
| 060290055062545 |
| 060290065003911 |
| 060290065003975 |
| 060290055062818 |
| 060290065003813 |
| 060290065003899 |
| 060290065003954 |
| 060290055062544 |
| 060290065003973 |
| 060290065003840 |
| 060290065003960 |

060290065003917
060290065003955
060290065003976
060290055062007
060290065003966
060290065003816
060290065003961
060290055062009
060290065003553
060290055062535
060290055062821
060290065003705
060290065003931
060290065003907
060290065003893
060290065003827
060290055062537
060290065003910
060290055062554
060290065003919
060290065003833
060290065003623
060290065003891
060290065003924
060290065003977
060290065003900
060290065003942
060290055062547
060290065003829
060290055062540
060290065003818
060290065003898
060290065003963
060290055062553
060290065003946
060290065003909
060290065003953
060290065003832
060290055062008
060290055062006
060290065003913
060290065003928
060290065003901
060290065003902
060290065003916
060290065003968

060290065003835
060290065003969
060290065003828
060290065003921
060290065003905
060290065003710
060290065003908
060290065003929
060290065003915
060290065003897
060290055062533
060290065003980
060290065003914
060290065003974
060290065003923
060290055062003
060290065003978
060290065003922
060290055062025
060290065003906
060290055062002
060290065003912
060290065003930
060290065003918