

PST Plumas Eureka-Johnsville Project Summary

Applicant:

Plumas-Sierra Telecommunications

U-Number: U-7218-C

Contact Person:

Corby Erwin

Member Services Manager

73233 State Route 70

Portola, CA 96122

530-832-6034

cerwin@psrec.coop

Project Title:

PST Plumas Eureka-Johnsville Mid-Mile / Last-Mile Broadband Project

Proposed Project Area Location:

Plumas Eureka State Park, Blairsden and Johnsville areas, Plumas County

Project Type:

Hybrid Mid-Mile and Last-mile

CASF Funding Requested:

\$1,601,408 in grant funds

Description of the Project:

To leverage the current PST mid-mile fiber network for which Plumas-Sierra Telecommunications was awarded ARRA and CASF funds, PST is now applying for additional CASF funding to deploy further mid-mile and last-mile broadband networks to serve the Plumas Eureka State Park, Blairsden and Johnsville areas of Plumas County.

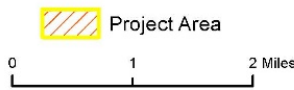
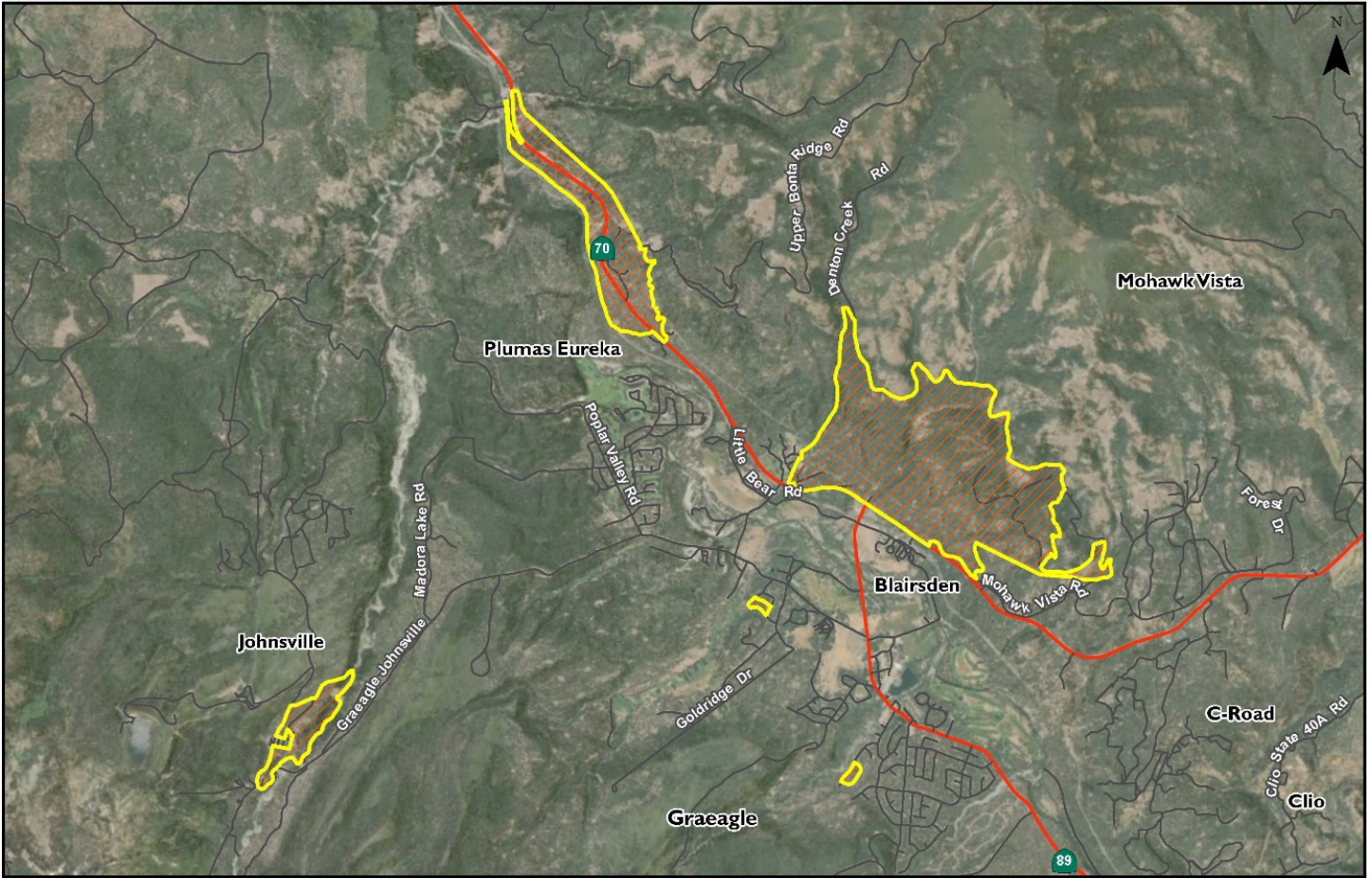
The mid-mile network expansion is vital to reach the deployment area for the last-mile target residences. The last-mile network will use fiber optic wireline technology interconnected with PST's mid-mile fiber network to offer service to 83 households in these unserved areas of Plumas County.

Service offerings will include minimum speeds of 10Mbps down/1Mbps up.

The use of fiber optics will allow PST to provide the households in this application with the most current technology, offering an improved quality of life that is not available to these residents now because of their current broadband isolation.

Map of the Proposed Project:

Plumas Sierra Telecom - CASF Project: Plumas Eureka - Johnsville - Gold Run - Graeagle



Fixed Broadband Served Status by Census Block within project area:

| | Unserved - Slow Service | Unserved - No Service | Unserved Total |
|--------------------------------|------------------------------------|----------------------------------|---------------------------|
| Population | 0 | 48 | 48 |
| Households | 0 | 22 | 22 |
| Housing Units | 0 | 56 | 56 |
| Addresses (from Item 4) | 0 | 83 | 83 |

This project will bring service to 83 address locations which are outlined in Item 4. These addresses are derived from the most current Plumas County parcel database.

Funding Level:

The area applied for is 100% unserved with no service (Dial-up only) according the CPUC’s 2018 Housing Unit projections. No existing CAF II areas are within project area. Requesting 100% project funding.

The project area includes 10 census blocks in Plumas County in the Community of Johnsville, Plumas Eureka State Park and Blairsden. This area encompasses 2.2 Square Miles.

Median Household Income: \$63,802

Anchor Institutions, Public Safety Locations and Businesses:

The project area does not include any Anchor Institutions or Public Safety Locations as identified by the current California Interactive Broadband Map.

There are six businesses in the proposed project area.

- River Pines Properties Inc
- Graeagle Meadows
- Coyote Bar & Grill
- Graeagle Fros-Tee
- Pacific Crest Construction
- California Department of Parks and Recreation

Major Infrastructure and Equipment to be Deployed:

- 1 Underground cabinet for E7
- 1 CISCO Management
- 1 E7 Chasis
- 1 8-port laser

- 1 GIGE card
- 1 GPON card
- 2 Rectifiers
- 1 Power inverter for cabinet
- 8 40K SFPs
- 1 80K SFP

Aerial and Underground Installation:

- 2.65 Miles of underground infrastructure
- 30.87 Miles of overhead infrastructure

Estimated Construction Timeline: 6 months

Proposed Broadband Project Plan:

The PST Plumas Eureka-Johnsville Mid-Mile / Last-Mile Broadband Project plans to use fiber optic cable to provide download speeds of up to 100 Mbps and upload speeds of up to 20 Mbps.

PST is leveraging its current mid-mile fiber network for which it was awarded ARRA and CASF funds to deploy this additional mid-mile and last-mile broadband network to serve the Plumas Eureka State Park, Blairsden and Johnsville areas of Plumas County. The mid-mile network expansion is vital to reach the deployment area for the last-mile target residences because there is no existing mid-mile infrastructure to interconnect with for this project, and without it, PST will not be able to provide service to these areas.

Plumas-Sierra Telecommunications believes that this mid-mile / last-mile broadband project is categorically exempt from CEQA requirements based on the findings of the CEQA analysis conducted for the previous ARRA grant, and because PST is using existing public utility easements considered previously disturbed.

PST is not disputing the Broadband Map depiction of served status.

PST is not seeking Ministerial Review of this project.